

AGENDA

Meeting: Amesbury Area Board
Place: [Online Meeting](#)
Date: Thursday 18 March 2021
Time: 6.30 pm

Including the Parishes of: Allington, Amesbury, Berwick St James, Bulford, Cholderton, Durnford, Durrington, Figheldean, Great Wishford, Idmiston, Milston, Newton Toney, Orcheston, Shrewton, Stapleford, Steeple Langford, Tilshead, Wilsford Cum Lake, Winterbourne, Winterbourne Stoke, Woodford and Wylde.

The Area Board welcomes and invites contributions from members of the public in this online meeting.

[To join the meeting and enter the discussion, please use this link](#)

[Guidance on how to access this meeting online is available here](#)

All the papers connected with this meeting are available on the Council's website at www.wiltshire.gov.uk

Press enquiries to Communications on direct lines (01225) 713114 / 713115

[Anyone who wishes to watch the meeting only can do so via this link – recording available for 6 months](#)

Please direct any enquiries on this Agenda to Tara Shannon, Senior Democratic Services Officer, direct line 01225 718352 or email tara.shannon@wiltshire.gov.uk

Wiltshire Councillors

Cllr Kevin Daley, Till and Wyle Valley
Cllr Graham Wright, Durrington and Larkhill
Cllr Mike Hewitt, Bourne and Woodford Walley (Vice-Chair)
Cllr Fred Westmoreland, Amesbury West
Cllr Robert Yuill, Amesbury East (Chairman)
Cllr John Smale, Bulford, Allington and Figheldean

Recording and Broadcasting Information

Wiltshire Council may record this meeting for live and/or subsequent broadcast. At the start of the meeting, the Chairman will confirm if all or part of the meeting is being recorded. The images and sound recordings may also be used for training purposes within the Council.

By submitting a statement or question for an online meeting you are consenting that you will be recorded presenting this, or this may be presented by an officer during the meeting, and will be available on the public record. The meeting may also be recorded by the press or members of the public.

Any person or organisation choosing to film, record or broadcast any meeting of the Council, its Cabinet or committees is responsible for any claims or other liability resulting from them so doing and by choosing to film, record or broadcast proceedings they accept that they are required to indemnify the Council, its members and officers in relation to any such claims or liabilities.

Details of the Council's Guidance on the Recording and Webcasting of Meetings is available on request. Our privacy policy can be found [here](#).

| | Time |
|--|--------|
| <p>1 Welcome and Introductions</p> <p>To welcome those present to the meeting.</p> | 6.30pm |
| <p>2 Apologies for Absence</p> <p>To receive any apologies for absence.</p> | |
| <p>3 Minutes (<i>Pages 1 - 8</i>)</p> <p>To confirm the minutes of the meeting held on 14 January 2021.</p> | |
| <p>4 Declarations of Interest</p> <p>To receive any declarations of disclosable interests or dispensations granted by the Standards Committee.</p> | |
| <p>5 Chairman's Announcements (<i>Pages 9 - 20</i>)</p> <p>To receive the following announcements through the Chairman:</p> <ul style="list-style-type: none"> • COVID-19 Update Please follow the regulations and stay at home wherever possible. An update on targeted COVID-19 community testing for asymptomatic people is included in the agenda pack. • Census 2021 Census day will be on March 21 and households can take part online. See https://census.gov.uk/ for more information. • Last Area Board before the May elections! A big thank you to all Members, officers, partners, community members and residents that have been involved in the last 4 years. <p>Due to the boundary changes which will come into force after the May elections, the Amesbury Community Area will be changing, please see the agenda pack for more details.</p> <p>Electoral Timetable - At present the Wiltshire Council Unitary Elections are taking place on Thursday 6 May 2021, along with the Police and Crime Commissioner Elections and Parish Elections. Social distancing measures will be in place at polling stations, you can also register to vote by post. The deadline to register to vote is 19 April 2021 and the deadline to register for a postal vote is 5pm on 20 April 2021. To register to vote go to https://www.gov.uk/register-to-vote or see https://www.wiltshire.gov.uk/Elections-2021 for further details. The count will most likely take place over 4 days,</p> | 6.35pm |

Friday 7 May (verification), Saturday 8 May (unitary), Sunday 9 May (parish) and Monday 10 May (PCC).

- **Fostering in Wiltshire**

We are currently seeking to recruit 100 new foster carers over three years so that our children can continue to live in their local communities, within Wiltshire. To become a foster carer, people need to be over 21 years of age and have a spare bedroom. More details are available on the fostering website: www.fosteringwiltshire.uk.

- **Wiltshire Independent Visitor Scheme**

The Wiltshire Independent Visitor Scheme provides independent befriending support to children in the care of Wiltshire Council. Our volunteer Independent Visitors (IVs) play a really important role, visiting the young person they are “matched” with regularly, listening to them and taking an interest in their lives. They offer consistency, and quality, fun, one to one time. IVs make a long-term commitment to support a young person until they leave the care system, and often beyond this time. If you would be interested in becoming an Independent Visitor please visit <https://www.wiltshire.gov.uk/children-young-people-independent-visitor-scheme>.

- **Become a Councillor**

Would you be interested in becoming a councillor? There are further details in the agenda pack or see [Becoming a councillor - Wiltshire Council](#) for further information.

- **Dorset & Wiltshire Fire and Rescue Authority -**

- **Consultation of draft Community Safety Plan 2021-24**

DWFRS are consulting on their draft Community Safety Plan, which sets out the key challenges and risks facing them over the coming years. With future financial uncertainty, the plan details what DWFRS intend to carry on doing and what they intend to review and do differently, in order to continue to provide a high level of service to communities. Please [visit the DWRFS website](#) to view the draft plan and the accompanying video, which provides a short overview. The consultation period runs from 17 February until 13 May 2021. If you wish to raise anything specific, or require any further assistance in accessing the information, please email DWFRS directly at consultation@dwfire.org.uk.

6 **Updates from Partners and Town/Parish Councils** (Pages 21 - 32)

6.55pm

To receive updates from the following partners:

- Wiltshire Police
- Dorset and Wiltshire Fire and Rescue Service
- MOD/Military Civilian Integration
- A303 – Highways England
- Healthwatch Wiltshire
- B&NES, Swindon and Wiltshire CCG
- Town and Parish Councils

| | | |
|----|---|--------|
| 7 | <p>Wiltshire Climate Alliance Update</p> <p>To receive an update from Christian Lange regarding Climate Change.</p> | 7.20pm |
| 8 | <p>Community Status Report</p> <p>To receive an update from Jacqui Abbott (Community Engagement Manager) on the Community Status Report, a copy of which can be found at minute 67 of the last meeting here.</p> | 7.25pm |
| 9 | <p>Area Board Re-Naming (<i>Pages 33 - 34</i>)</p> <p>To review the re-naming survey results and discuss the re-naming of Amesbury Area Board.</p> | 7.30pm |
| 10 | <p>Update from the Community Area Transport Group (CATG) (<i>Pages 35 - 62</i>)</p> <p>To consider any updates and recommendations from the Community Area Transport Group (CATG).</p> <p>The Minutes of the latest CATG meeting are attached for information.</p> | 7.40pm |
| 11 | <p>Health & Wellbeing (<i>Pages 63 - 72</i>)</p> <p>To receive an update from the Amesbury Health and Wellbeing Group.</p> <p>To consider the following applications for Health and Wellbeing Funding:</p> <ul style="list-style-type: none"> • Sing and Breath Wiltshire, £1,500.00 towards music for wellbeing. • Rotary, £300.00 towards a community Easter Egg hunt. <p>Health and Wellbeing Grant report to follow.</p> | 7.45pm |
| 12 | <p>Amesbury Youth Forum (<i>Pages 73 - 82</i>)</p> <p>To receive an update on the Amesbury Youth Forum.</p> | 7.55pm |

To consider the following applications for Youth Grant Funding:

- Durrington Youth Services, £6,456.25 towards Durrington Youth Services.
- Army Welfare Service - Community Support, £2,440.00 towards Easter holiday craft packs.
- Army Welfare Service - Community Support, £4,500.00 towards Larkhill Summer holiday activity provision.
- Amesbury Area Board initiative, £5,000.00 towards the Amesbury Rural Youth project.

13 **Community Area Grants** (Pages 83 - 88)

8.05pm

To determine the following applications for Community Area Grant funding:

- Idmiston Parish Council, £5,000.00 towards the Gomeldon Zip Wire project.
- The Bridge Youth Project, £700.00 towards their social skills project in schools.
- The Vault gymnastics & fitness centre, £2,000.00 towards the vault new landing area and tumble mat.
- Bourne Valley Scout Group, £500.00 towards repairs to Scout storage facility.
- Shrewton Sports and Social Club, £3,500.00 towards Shrewton Social Club new kitchen.
- Winterbourne Parish Council, £5,000.00 towards safety improvements to Winterbournes sport and recreation facilities.
- Winterbourne Glebe Hall Management Committee, £750.00 towards establishing a new village hall website.
- Tilshead Parish Council, £1,349.32 towards purchasing a Speed Indicator Device.
- Amesbury History Centre CIO, £4,911.54 towards audio visual equipment.

14 **Urgent items**

Any other items of business which the Chairman agrees to consider as a matter of urgency.

15 **Future Meeting Dates and Close**

8.30pm

The next meeting of the Amesbury Area Board will be held on 18 May 2021 (time to be confirmed). This meeting will be to elect a Chair, Vice Chair and appoint Members to Outside Bodies and Working Groups for the forthcoming year.

The next full meeting of the Amesbury Area Board will be held on 10 June 2021 at 6.30pm.

MINUTES

Meeting: Amesbury Area Board

Place: Online Meeting

Date: 14 January 2021

Start Time: 6.30 pm

Finish Time: 7.45 pm

Please direct any enquiries on these minutes to:

Tara Shannon Senior Democratic Services Officer, (Tel): 01225 718352 or (e-mail) tara.shannon@wiltshire.gov.uk

Papers available on the Council's website at www.wiltshire.gov.uk

In Attendance:

Wiltshire Councillors

Cllr Kevin Daley, Cllr Mike Hewitt (Vice-Chair), Cllr John Smale,
Cllr Fred Westmoreland, Cllr Graham Wright and Cllr Robert Yuill (Chairman)

Wiltshire Council Officers

Jaquai Abbott (Community Engagement Manager), Dominic Argar (Assistant
Multimedia Officer) and Tara Shannon (Senior Democratic Services Officer)

Partners

Wiltshire Police
Office of the Police and Crime Commissioner
Highways England
MOD

Total in attendance: 24 in the meeting and 2 watching the live stream

| <u>Minute No.</u> | <u>Summary of Issues Discussed and Decision</u> |
|-------------------|--|
| 61 | <p><u>Welcome and Introductions</u></p> <p>Cllr Mike Hewitt, Vice Chairman welcomed everyone to the meeting of the Amesbury Area Board and invited Cllrs to introduce themselves.</p> |
| 62 | <p><u>Apologies for Absence</u></p> <p>Apologies for absence had been received from:</p> <ul style="list-style-type: none"> • Neill Page (DIO Army Basing Programme Lead) |
| 63 | <p><u>Minutes</u></p> <p>The minutes of the meeting on 19 November 2020 were presented for consideration and it was;</p> <p>Resolved:</p> <p>To approve the minutes as a correct record.</p> |
| 64 | <p><u>Declarations of Interest</u></p> <p>There were no declarations of interest.</p> |
| 65 | <p><u>Chairman's Announcements</u></p> <p>The Chairman gave the following announcements:</p> <ul style="list-style-type: none"> • Healthy Us Weight Management Programme The written update on the Healthy Us Weight Programme was noted. • COVID-19 Community Packs The latest COVID-19 figures were shown to the meeting, and the stay at home message reiterated. Details regarding the updated community pack were given and the pack could be found here www.wiltshire.gov.uk/public-health-coronavirus#community-pack. • Census 2021 The written update on the 2021 Census was noted. • Local Plan Review Consultation Attendees were encouraged to take part in the Local Plan Review consultation and the Gypsy and Traveller Consultation which were running until 9 March 2021. Further information could be found in the agenda supplement or online here: https://www.wiltshire.gov.uk/planning- |

| | |
|----|---|
| | <p>policy-local-plan-review.</p> |
| 66 | <p><u>Updates from Partners and Town/Parish Councils</u></p> <p>Updates were received from the following partners:</p> <ul style="list-style-type: none"> <p>• Wiltshire Police</p> <p>Dean Knight, Amesbury Inspector was in attendance and gave an update to the meeting. It was stated that crime figures were down. Several warrants had been executed resulting in the seizure of drugs and locating a vulnerable missing person. A joint operation with the Royal Military Police had been undertaking in order to combat 4x4's driving on Salisbury Plain. Dog thefts were raised as there had been a lots of reports on social media regarding this. It was explained that there had been 17 reports of dog thefts in the whole of Wiltshire in the last year. Therefore, whilst not diminishing the issue dog thefts were not thought to be as prevalent as one would think from social media.</p> <p>In response to questions it was stated that the money raised from COVID-19 fixed penalty notices did not go back to local forces directly but went into a national pot. So, there was no financial incentive to issue the notices. Regarding increased traffic levels compared to the first lock down and whether people were stopped to ask where they were coming from or going to, it was explained that all forces were moving from education to enforcement. There were patrols focusing on the issue, but these were currently intelligence led rather than patrolling certain routes.</p> <p>• Office of the Police and Crime Commissioner</p> <p>Jerry Herbert, deputy PCC gave details regarding the role of the PCC and what had been delivered by the PCC in the last year, including increased numbers of officers, a new rural crime team and investing in resources to counter cyber-crime. The PCC was proposing a raise in police precept. It was explained that the maximum increase that was allowed to the police precept was £15 a year for a band D property, which was what the PCC was asking for. This equated to a band D property seeing an increase of £1.25 a month. It was highlighted that Wiltshire Police were the third lowest nationally funded force in the country. The extra £15 a year would help to fund an increase in officers and bolster community policing teams. The PCC was consulting on the proposals. More information could be found at www.wiltshire-pcc.gov.uk and the survey was located at https://www.surveymonkey.co.uk/r/PNHBKSG and was open until 2 February 2021. It was confirmed that these details would be sent out in the weekly newsletter from the Community Engagement Manager.</p> <p>Cllr Wright stated that the Police offered very good value for money and felt that the PCC should do more to promote their successes. Mr Herbert agreed and stated that if any Members had thoughts on how better they should communicate they should let the PCC know. Likewise, if any parishes had newsletters and they would like the PCC to input updates</p> |

for, then they should get in touch.

- **MOD/Military Civilian Integration**

Lt Col Nick Turner gave an update. Some local units had been deployed to other locations to help with testing. Stringent rules were being followed on base in order to help prevent the spread of COVID. Following the last meeting Lt Col Turner had circulated details to the Members on fly tipping. Wg Cdr Vincent Thomas stated that Boscombe Down was quiet at the moment due to COVID-19.

- **A303 Highways England**

Marcia Daniels and Esther Gordon Smith gave an update to the meeting. It was explained that the Stonehenge project for the A303 was given consent in November. The preliminary works contractor (Osbourne) and archaeology contactor (Wessex Archaeology) had been appointed. In late spring/early summer 2021 preliminary works would start, in late 2021/2022 the main works contractor would be announced, and the main works should start in 2022/23. More details on the timeline would be available soon. Virtual public information events would be held in order to keep local people informed and involved. Local small and medium enterprises were encouraged to sign up to the [Highways England](#) business directory so that they could get involved in the supply chain for the project. In response to questions it was stated that the Save the Stonehenge World Heritage Site group had applied for a Judicial Review (JR) to the Department of Transport, Highways England were an interested party. It was confirmed that the project would continue while the JR process continued. It was confirmed that the road would be kept open during construction and that disruption would be minimised. It was explained that the designated funds scheme could be used to fund local projects, for example the Solstice Park cycle route and Esther Gordon-Smith would be the contact for the scheme.

- **Healthwatch Wiltshire**

A written report was attached to the agenda.

- **Wiltshire CCG**

A written report was attached to the agenda.

- **Town and Parish Councils**

At the invitation of the Vice-Chairman, Jan Tidd of Farleys Malone gave an update on a successful virtual Christmas Lunch that had been undertaken with the help of Amesbury Area Board grant funding.

Cllr Wright gave an update on behalf of Durrington Town Council who had recently installed some Speed Indicator Devices (SID's) which had dramatically helped to reduce speeding. Durrington Town Council passed on their thanks to the board for funding received.

| | |
|----|--|
| | <p>Jacqui Abbott (Amesbury Community Engagement Manager) gave an update to the meeting. It was explained that the Community Status Report was a way to refresh local priorities so that the board concentrated their efforts on projects relevant to local residents. The officer had undertaken many discussion with local organisations and groups and combined this with data from various sources and partners, such as public health data in order to identify priorities.</p> <p>The top five emerging issues were:</p> <ul style="list-style-type: none"> • Anti-social behaviour • Highway infrastructure and maintenance • Accessible, positive activities for all ages – building these back up after Covid-19 • Environment and carbon reduction / Waste and recycling / fly-tipping • Mental Health and Wellbeing support all ages <p>It was suggested that having five top priority issues to concentrate on may be a good way forward, and an action plan would be developed. The report was to be a fluid document that could be updated regularly and would be brought back to future area boards for discussion.</p> |
| 68 | <p><u>Area Board Re-Naming</u></p> <p>Details were given regarding a survey that was taking place in order to gather views on the whether the Area Board should change its name. The survey would close on 31 January and residents and parishes were encouraged to take part.</p> <p>It was stated that as of 13 January, 14 responses had been received, which were summarised as:</p> <ul style="list-style-type: none"> • 10 responses favoured renaming to Stonehenge Area Board • 1 favoured not changing the name from Amesbury Area Board • 3 other name suggestions were received: <ul style="list-style-type: none"> ○ Salisbury Plain South Area Board ○ Stonehenge Community Area Board ○ Avon and Till Valleys Area Board <p>Once the survey has closed the issue would need to come back to a future area board meeting to be discussed and for a formal recommendation to be made. Once that had occurred the proposal would then need go to the Electoral Review Committee and on to Full Council for approval.</p> |
| 69 | <p><u>Update from the Community Area Transport Group (CATG)</u></p> <p>Cllr Hewitt stated that there had not been a meeting of the CATG since the last area board. Parishes should register any issues so that they could be raised at the next meeting, which was taking pace on 26 February 2021.</p> |
| 70 | <p><u>Health & Wellbeing Group</u></p> |

| | |
|----|---|
| | <p>Cllr Wright gave a brief update and gave the dates for the next four HWBG meetings as:</p> <ul style="list-style-type: none"> • Thursday 4 February 10am – 11.30am • Tuesday 4 May 10am – 11.30am • Wednesday 4 August 10am – 11.30am • Thursday 4 November 10am – 11.30am <p>Several small grants had been awarded under the delegated authority of the CEM over the Christmas period to enable some very worthwhile projects to take place. Future applications were encouraged.</p> <p>It was,</p> <p>Resolved:</p> <p>To note that the following grants had been awarded under the delegated authority of the Community Engagement Manager.</p> <ul style="list-style-type: none"> • Figheldean Parish Council. £300.00 towards helping the vulnerable. • Winterbourne Stoke Village Preservation Society, £313.30 towards their Elderly Parishioner Welfare Package. • Durrington Over Sixties, £300.00 towards their Durrington Over Sixties Post COVID Celebration. • Durrington and District Day Centre, £300.00 towards their Gifts for members at Christmas project. • Support for Vulnerable and Lonely in the Winterbournes, £300 towards food parcels for lonely, isolated and vulnerable villagers |
| 71 | <p><u>Area Board Funding</u></p> <p>Cllr Fred Westmoreland introduced the grant applications as detailed in the agenda.</p> <p>Representatives of the organisations applying for grants spoke in support of their applications.</p> <p>The board considered the applications for Community Area Grant funding and Youth Grant funding and it was;</p> <p>Resolved:</p> <p>Community area Grants</p> <ul style="list-style-type: none"> • To award Shrewton Cricket Club, £5,000.00 towards a Ride on Outfield Triple Mower. <p>Youth Grants</p> |

| | |
|----|---|
| | <ul style="list-style-type: none"> • To award the Army Welfare Service, £2,000.00 towards School Holiday Activities and Trips. |
| 72 | <p><u>Urgent items</u></p> <p>There were no urgent items.</p> |
| 73 | <p><u>Future Meeting Dates and Close</u></p> <p>The Chairman thanked everyone for attending and announced that the next meeting of the area board would be held on 18 March 2021 at 6.30pm.</p> |

This page is intentionally left blank

Chairman's Announcement

| | |
|---------------------|---|
| Subject: | Update on targeted COVID-19 community testing for asymptomatic people |
| Web contact: | Email: Hayley.mortimer@wiltshire.gov.uk |

We will shortly be introducing the Government's COVID-19 rapid community testing initiative for specific groups of asymptomatic people in Wiltshire.

Our programme is primarily aimed at the following groups of people:

- Smaller businesses (50 employees or less) where staff are unable to work from home
- Early years staff based at private (non-maintained nurseries)
- Childminders

Our test sites will be at the following locations:

- Trowbridge – County Hall
- Devizes – Leisure Centre
- Salisbury – Five Rivers Health and Wellbeing Centre
- Chippenham – Monkton Park

Devizes will be the first to open on 18 February and the rest will soon follow. Until the other sites are open, the Devizes site will initially be the only one that people can book a place for.

Those in smaller businesses who cannot work from home, staff at private (non-maintained) early years settings, and childminders have been chosen because they are not currently involved in any other national mass-testing programme.

People will have to book to arrange an appointment and will not be tested if they have not done this.

The tests are self-administered and will take less than 15 minutes and results should be known within half an hour.

This is not to be confused with surge testing. Surge testing is increased testing (including door-to-door testing) and enhanced contact tracing in specific locations in England and is not currently taking place in Wiltshire.

Free testing continues to be available to everyone in Wiltshire who has COVID-19 symptoms – high temperature, continuous cough or loss of / change in taste or smell. People should visit www.nhs.uk/coronavirus or call 119 to book a test in that instance.

With regards to early years staff, we're very aware that due to the need to have the correct ratios at settings, that logistically it might be difficult for them to release staff to attend one of the testing sites. We completely sympathise with this, but at the moment this is the only way we are able to provide this testing service. We are speaking to representatives at national Government to see if more can be done and will update everyone should the situation change.

When used alongside other measures, this type of community testing has the potential to help reduce the spread of COVID-19 within communities.

However, should people choose to participate in the testing programme, it must be stressed that getting a negative test result is only a snapshot indication that the person tested didn't

Chairman's Announcement

have COVID-19 at that time. It is therefore not a passport to freedom and all other COVID secure measures must continue to be followed.

Anyone who receives a positive Lateral Flow Test result automatically activate legal obligations to self-isolate and may also claim for a Test and Trace payment if they are eligible. If we all continue play our part, then we can control the spread of the virus and help ease the pressure that our health and care services are under.

NHS Test and Trace is working with government departments, institutions and employers across both public and private sectors to support delivery of asymptomatic testing to large organisations, including those providing critical services. More information on this can be found at Register to order coronavirus tests for your employees - GOV.UK (www.gov.uk) More information, including comprehensive FAQs can be found at:

www.wiltshire.gov.uk/publichealth- coronavirus-testing

If you have any further questions, please don't hesitate to contact Hayley Mortimer, Public Health Consultant on hayley.mortimer@wiltshire.gov.uk or Jessica Ryan, Public Health Specialist, jessica.ryan@wiltshire.gov.uk

We will keep you updated on this work.

CENSUS 2021

Households across the local authority area of Wiltshire, will soon be asked to take part in Census 2021.

The census is a once-in-a-decade survey that gives us the most accurate estimate of all the people and households in England and Wales. It has been carried out every decade since 1801, with the exception of 1941.

It will be the first run predominantly online, with households receiving a letter with a unique access code, allowing them to complete the questionnaire on their computers, phones or tablets.

“A successful census will ensure everyone from local government to charities can put services and funding in the places where they are most needed,” Iain Bell, deputy national statistician at the Office for National Statistics, said.

“This could mean things like doctors’ surgeries, schools and new transport routes. That’s why it is so important everyone takes part and we have made it easier for people to do so online on any device, with help and paper questionnaires for those that need them.”

Census day will be on March 21, but households across the country will receive letters with online codes allowing them to take part from early March.

The census will include questions about your sex, age, work, health, education, household size and ethnicity. And, for the first time, there will be a question asking people whether they have served in the armed forces, as well as voluntary questions for those aged 16 and over on sexual orientation and gender identity.

Results will be available within 12 months, although personal records will be locked away for 100 years, kept safe for future generations.

For more information, visit [census.gov.uk](https://www.census.gov.uk).

If you need help to promote the census, visit our [Downloadable resources](#) page.

Chairman's Announcements

| | |
|---------------------|--------------------------------------|
| Subject: | Amesbury Area Board boundary changes |
| Web contact: | |

Due to the boundary changes which will come into force after the May elections as a result of the LGBCE boundary review and Area Board Boundary Review, Amesbury Area Board will say a fond farewell to the parishes of:

- Allington
- Cholderton
- Idminton
- Newton Toney
- Steeple Langford
- Winterbourne, and
- Wylde

Joining the new Amesbury Community Area will be the parishes:

- Enford
- Fittleton cum Haxton
- Netheravon, and
- South Newton

So, the new Amesbury Community Area will comprise the parishes of:

Amesbury, Berwick St James, Bulford, Durnford, Durrington, Enford, Figheldean, Fittleton cum Haxton, Great Wishford, Milston, Netheravon, Orcheston, Shrewton, South Newton, Stapleford, Tilshead, Wilsford cum Lake, Winterbourne Stoke, Woodford

These parishes will form the divisions of:

Amesbury East and Bulford, Amesbury South, Amesbury West, Avon Valley, Durrington and Till Valley.

Chairman's Announcements

| | |
|---------------------|--|
| Subject: | Fostering in Wiltshire |
| Web contact: | Email: claregoodspeed@wiltshire.gov.uk fostering@wiltshire.gov.uk Web: www.fosteringwiltshire.uk |

Our foster carers do an amazing job, making a massive difference to the life chances of some of Wiltshire's most vulnerable children and young people. Foster carers provide a safe and nurturing home for our children who have experienced abuse, trauma and loss.

We are currently seeking to recruit 100 new foster carers over three years so that our children can continue to live in their local communities, within Wiltshire. We started a campaign back in May 2020 at the start of Foster Care Fortnight to encourage more applications to foster. To date, we have successfully recruited 26 new fostering families towards our target. This is great news, but we still don't have enough to keep all our children in care within Wiltshire, especially for our teenagers.

With more Wiltshire Council foster carers, our children and young people can remain living locally, which means they are more readily able to remain in the same school, see friends and maintain relationships with their family.

We are sharing our message with each area board, with the hope you can encourage people to support and promote our recruitment campaign and highlight the importance of foster care in your local communities.

In all areas, we require more fostering families to look after our children in care. We know that some areas may need a significant increase whereas a few others may only need a few more. We would like our fostering service to get to the position where we are able to offer children a choice of foster carer to best suit their needs.

We especially need more foster carers who want to care for our teenagers and specialist carers, able to look after a parent and child and /or provide an emergency home at a time of crisis and/or look after children with complex medical needs and/or disabilities.

Louise, a 14 year old young person who lives in foster care, who has explained below how foster carers can help teenagers deal with the ups and downs of growing up.

"When I've been upset, they've cheered me up. They also help me understand my feelings and help me with my worries. They are also good fun too and don't take things too seriously. Children need foster carers who have lots of time. They listen to what I have to say and are interested in my thoughts. The three things I think are most important for foster carers are: listen to what I say, make me feel like I am a part of their family and get along with me in general."

To become a foster carer, people need to be over 21 years of age and have a spare bedroom. More details are available on the fostering website: www.fosteringwiltshire.uk

Fostering payments vary depending on the skills and experience of the foster carer, starting at £350 per week per child up to a maximum of £1300 per week for a specialist parent and child carer providing an assessment.

People can find out more information by:

- Calling fostering on 0800 1696321
- Emailing fostering@wiltshire.gov.uk
- Visiting www.fosteringwiltshire.uk

Chairman's Announcements

- Text 'Foster' to 60002

To have a discussion about how we can work together to recruit more foster carers in your local area, please contact Clare Goodspeed, the lead social worker for fostering recruitment by:

- Calling 01225 716510
- Emailing: claregoodspeed@wiltshire.gov.uk

Chairman's Announcements

| | |
|---------------------|--|
| Subject: | Wiltshire Independent Visitor Scheme |
| Web contact: | Email: Sheila.lupton@wiltshire.gov.uk IVScheme@wiltshire.gov.uk https://www.wiltshire.gov.uk/children-young-people-independent-visitor-scheme |

Wiltshire Independent Visitor Scheme provides independent befriending support to children in the care of Wiltshire Council. These are children who are fostered or living in other care settings, usually in Wiltshire but sometimes outside the county borders. It is a requirement that the council to provide an Independent Visitor service, but young people chose whether or not they wish to take up this offer. This means they are really motivated to take part!

Our volunteer Independent Visitors (IVs) play a really important role, visiting the young person they are "matched" with regularly, listening to them and taking an interest in their lives. They offer consistency, and quality, fun, one to one time. IVs make a long-term commitment to support a young person until they leave the care system, and often beyond this time.

We already have a fantastic team of almost 60 volunteer IVs, who are out supporting young people in the community. The scheme is very popular with young people and currently we have a waiting list of those waiting to be linked up with an IV.

These are some comments from young people in our scheme, talking about what having an IV means to them:

"She's very funny, very caring, if I am ever sad, she is someone to talk to".

"She's brilliant, bubbly and nice to be around."

"It's lovely to have somebody 'normal' to talk to outside of the system."

"You get to do things you never knew about."

We are sharing our message with each Area Board, with the hope you can promote our volunteering opportunity and highlight the importance of this scheme. We don't want our young people to be kept waiting for a "match" and so we are keen to find the right volunteers in the places where they are needed. At present, we are particularly short of male volunteers, those who have experience of supporting children with more complex needs, and also volunteers who might be willing to travel further afield if needed (e.g. the south coast and Gloucester area). We want to find volunteers from Wiltshire if possible, in case young people move back in-county when they are older.

All volunteers will require an enhanced DBS disclosure. They should be over 18 and able to make a long-term commitment to meet with a young person for a couple of hours every three to four weeks. There is a requirement that all volunteers should be car drivers and be independent from Wiltshire Council (not a teacher, foster or residential carer or member of children's social care staff).

Volunteers are reimbursed for their travel and any visit expenses. The scheme also offers volunteers regular training and support.

How to register an interest

If you would like to know more about the IV Scheme, please visit

Email: IVScheme@wiltshire.gov.uk

Phone: Shelley Barnes on 01225 713897 or Deborah Welling on 01225 713980

Chairman's Announcements

| | |
|---------------------|---|
| Subject: | Stand as a unitary, town or parish councillor in May |
| Web contact: | Links provided below |

Stand as a unitary, town or parish councillor in May

Do you have the desire to help and become involved in your community?

Do you have time to give?

Do you like a different challenge every day?

...If so, it might be time for you to stand as a local councillor.

Elections are taking place on 6 May 2021 for Unitary, Town and Parish Councils – it's not too late to be nominated!

Unitary Elections

Find out more about what it is like to be a Wiltshire unitary councillor, by visiting [Becoming a councillor - Wiltshire Council](#) where you will find FAQs, including details of how to manage the role around work commitments. See a video from the [Local Government Association](#) about why you should consider standing.

The role can be flexible around existing commitments and unitary councillors are currently paid an allowance of £13,833 per year for spent on the role. A carers allowance is also available to help towards care for a dependent whilst you undertake some council duties, such as attending meetings.

Parish and Town Council elections

A parish councillor is immersed in the local community and it can be a really rewarding role. Find information and videos from parish councillors about their experiences with the National Association of Local Councils [Elections — #MakeAChange \(nalc.gov.uk\)](#), or get in touch with your local parish council.

What next?

Details of how to run for election are available at:

For the unitary elections visit [Unitary elections - Wiltshire Council](#)

For the Town and Parish Elections visit [Town and parish elections - Wiltshire Council](#)

The [Local Government Association](#) and [Electoral Commission](#) also have lots of useful guidance.



DORSET & WILTSHIRE FIRE & RESCUE SERVICE

WILTSHIRE AREA BOARD REPORT

Community Safety Plan

DWFRS Community Safety Plan can be found on the DWFRS website;

<http://www.dwfire.org.uk/community-safety-plan/>

Prevention

We are committed to making a real difference to the lives of people in Dorset and Wiltshire. Our aim is to reduce the level of risk and harm to our communities from fire, targeting those most at risk. We do this primarily through our Safe and Well visits.

A Safe and Well visit is **FREE** and normally lasts about one hour covering topics such as:

- Using electricity safely
- Cooking safely
- Making an escape plan
- What to do if there is a fire
- Keeping children safe
- Good practice – night time routine and other points relevant to you
- Identifying and discussing any further support the occupier may need

Are you or anyone you know:-

- Over the age of 65?
- Need a smoke detector?
- Have a long-term health condition?
- Suffer from poor hearing or sight loss?
- Would you struggle to escape in the event of a fire?

If you can answer yes to more than one of these questions, then please call us on 0800 038 2323 or visit <https://www.dwfire.org.uk/safety/safe-and-well-visits/>



DORSET & WILTSHIRE
FIRE AND RESCUE

Protection

On-going interaction by Protection Team members with Local Authorities, Private landlords and tenants regarding fire safety-related matters: external cladding systems; fire detection and warning systems; fire resisting doors (& self-closers); combustibility/fire resistance of construction materials; commercial and residential sprinklers systems and water-mist suppression systems

General Enquiries

If you have a general fire safety enquiry regarding commercial property, please email fire.safety@dwfire.org.uk and the Fire Safety Team will respond in office hours.

Fire Safety Complaint

If you wish to tell us about fire safety risks in commercial premises, such as locked or blocked fire exits, you have three options:

- You can email the fire safety department at enforcement@dwfire.org.uk
- Call 01722 69 1717 during office hours (9am-5pm).
- Call our Service Control Centre on 0306 799 0019 out of office hours (5pm-9am)

On Call Recruitment

Have you always wondered if you could join the fire service, but haven't had the opportunity to find out more? Have you found yourself seeking your next challenge, keen to give back to the local community or wanting to learn new skills including leadership and teamwork? Then becoming an on-call firefighter is for you.

As a paid position, on-call firefighters commit anywhere between 40 to 120 hours per week, during which time they must be able to respond to the station immediately.

Many have 'normal' jobs during the day, then upon their return home make themselves available overnight or during the weekends. Some of our crew respond from their workplaces during the day, and we are very grateful to their employers for releasing them to perform their vital duties.

Anyone over 18 years old can apply (although you can also apply once you are 17½) you must be able to respond and attend the fire station within 5-8 minutes, you have a good standard of physical fitness (i.e. you are generally active), and you must have the right to work in the UK.

Further information on becoming an On Call Firefighter can be found at www.dwfire.org.uk/working-for-us/on-call-firefighters/ or should you have any questions, you can call **01722 691444**.



Recent News & Events

DWISE: Dorset and Wiltshire Inspirational Safety Education.



The Dorset and Wiltshire Inspirational Safety Education (DWISE) programmes and resources are produced and delivered by the Education Team of Dorset and Wiltshire Fire and Rescue Service. During this period we are providing resources for parents, carers and educators to use which will help children understand how they can help keep themselves safe and well. The resources are designed to support English, maths and art as well as providing safety information and using firefighters to inspire children to be fit and healthy.

For more information please visit: <https://www.dwfire.org.uk/education/parents-and-carers/>

Advice for people living with dementia



Dementia is a National Health priority in the UK, as the number of people living with the condition continues to increase. Dementia is also a substantial factor in increasing the risk of injury or death from fire in the home.

Fire and Rescue Services across the UK are aware of the link between serious home fires and the elderly, especially those with mobility and memory loss health needs.

For further information please visit: <https://www.dwfire.org.uk/safety/advice-for-carers/advice-for-dementia-sufferers/>

Boat safety



Boat safety is a priority in Dorset and Wiltshire, as hundreds of people live and work on our waterways, in addition to the thousands of visitors who come each year to enjoy a peaceful holiday in our seaside towns or aboard a narrowboat.

Our Safe and Well visits include people who live on boats – [click here](#) to request a visit.

See also:

- The Fire Kills campaign has produced a handy leaflet on [Boat Safety](#)
- For further information about general boat fire and CO safety, visit www.boatsafetyscheme.org/stay-safe
- For broader safety advice, visit the Maritime & Coastguard Agency website www.gov.uk/government/organisations/maritime-and-coastguard-agency and the Royal National Lifeboat Institution www.rnli.org

Winter safety



Keeping warm in the winter means using portable heaters, electric blankets or wheatbags – but all of these carry a fire risk.

Please visit our website for more information: <https://www.dwfire.org.uk/safety/safety-at-home/seasonal-advice/winter-safety/>

The Fire Kills campaign has produced a leaflet on [Fire Safety in the Winter](#). There is a wealth of good advice at www.metoffice.gov.uk/barometer/advice

Helping our NHS

The last few months have seen our Firefighters and corporate members of staff at the City Hall Covid 19 Vaccination Centre where they provided support and assistance to our colleagues in the NHS and members of the public who attended for their vaccinations.

We have also had several On Call Firefighters attached to the Ambulance Service where again they have been supporting them in driving ambulances to reduce the stress on the vital services they provide to our communities.



Demand

Total Fire Calls for Salisbury Fire Station for period Dec 1st '20 to 24th Feb '21:-

| Category | Total Incidents |
|--|-----------------|
| No. of False Alarms | 116 |
| No. of Fires | 51 |
| No. of Road Traffic Collisions and other Emergencies | 112 |
| Total | 279 |



**DORSET & WILTSHIRE
FIRE AND RESCUE**

Total Fire Calls for Wilton Fire Station for period Dec 1st '20 to 24th Feb '21:-

| Category | Total Incidents |
|--|-----------------|
| No. of False Alarms | 8 |
| No. of Fires | 7 |
| No. of Road Traffic Collisions and other Emergencies | 15 |
| Total | 30 |

Total Fire Calls for Amesbury Fire Station for period Dec 1st '20 to 24th Feb '21:-

| Category | Total Incidents |
|--|-----------------|
| No. of False Alarms | 14 |
| No. of Fires | 5 |
| No. of Road Traffic Collisions and other Emergencies | 14 |
| Total | 33 |

**Matthew Maggs
Station Manager**

**Email: Matthew.maggs@dwfire.org.uk
Mobile: 07595 966708**

Mental health forum members produce their own guide to support services

People with lived experience of mental ill health have produced their own comprehensive guide to mental health and wellbeing services on offer in Wiltshire.

Members of the Wiltshire Mental Health Open Forum worked together to compile the Wiltshire Mental Health and Wellbeing Support Services list, which details where adults, children and young people can get support, counselling, and advice on topics such as addiction, bereavement and homelessness.

Set up in July 2020, the forum is a joint collaboration between Healthwatch Wiltshire and mental health service provider Avon and Wiltshire Mental Health Partnership NHS Trust (AWP), and is supported by a range of organisations including Wiltshire Council, Richmond Fellowship, Carer Support Wiltshire and Citizens Advice.

The free online forum, which runs once a month, provides a unique opportunity for people to speak directly to those who run mental health services in Wiltshire, talking about their experiences and sharing their ideas for ways services could be improved.

Forum regulars wanted to create the list of contacts as a way of helping people who are struggling with their mental health to find the right support for them quickly and easily.

One member said: “I found, as a mental health service user, it was especially useful to learn more about the different organisations that are out there and to be able to contribute my opinions and ideas and for them to be listened to by professionals. Being part of the creation of the list was very exciting.”

AWP Local Involvement Coordinators **Teresa Bridges and Christina Gregory** said: “We have been really pleased with the way the forum is going and the willingness of people to join us virtually and get their views heard.

“Service users and providers informed us that there was not enough information out there about the range of services available to someone needing mental health support in Wiltshire, and when someone is very poorly the last thing they would do is look at notice boards or search online. Therefore they needed something that could be given to them directly, by their GP for example, and hopefully this is what we have achieved.”

Claire Edgar, Director - Learning Disabilities and Mental Health at Wiltshire Council, said: “Having access to support and advice for those struggling with mental health is so important and particularly so at this current time as we all cope with the challenges of life during the pandemic. This guide is going to be a tremendous help to many people to help them access the right support with ease.”

Jo Woodsford, Volunteer and Partnerships Lead at Healthwatch Wiltshire, said: “Our members have taken complete charge of putting this list of resources together, bringing their own experiences to creating something that not only benefits them but will help other people too. Their determination and enthusiasm has been amazing, and we’d like to say a big thank you to them for all their hard work.”

Learn more about the forum and download the guide at healthwatchwiltshire.co.uk/wiltshire-mental-health-open-forum

Update for Wiltshire Area Boards

February 2021

Coronavirus vaccination

More than 137,000 people in Bath and North East Somerset, Swindon and Wiltshire have received their first coronavirus vaccination since we began vaccinating in December 2020.

By the end of January we had offered the vaccine to health and care workers and residents in all care homes in Wiltshire.

Vaccination across the county is being led by GPs working together in Primary Care Networks with additional services available in a large vaccination centre in Salisbury City Hall and, for those in west Wiltshire, at Bath Racecourse.

Early February saw three pharmacies in the region starting to provide the vaccine to those people who are currently eligible - Shaunaks Pharmacy in Westbury, The Pharmacy in Ludgershall and Avicenna Pharmacy in Swindon. Due to space constraints, the Pharmacy in Ludgershall is basing its vaccine clinic at the nearby Memorial Hall.

The three pharmacy vaccination sites can be booked through the national coronavirus vaccine booking system, along with the large vaccination centres at Bath Racecourse and Salisbury City Hall.

Vaccinators are also now visiting housebound patients who fall into the top priority groups in their own home, and we hope to have completed this phase of the vaccination programme by the middle of February

The CCG website has a dedicated Covid-19 vaccination page www.bswccg.nhs.uk/latest-covid-19-updates with all the latest information including a detailed question and answer section which is updated regularly as issues arise.

We have established an email address for any enquires from the public relating to the vaccination programme: bswccg.vaccinequery@nhs.net

Change to the management of the PALS and complaints service for Wiltshire

From Monday 1 February 2021 our Patient Advice and Liaison Service (PALS) and complaints service for Wiltshire will be managed by the South, Central and West

Commissioning Support Unit (SCWCSU) for a period of approximately nine months. The SCWCSU team already handle feedback for the Swindon locality.

The SCWCSU team will be taking on new cases from 1 February 2021. All existing cases will be retained and closed down by the CCG in line with existing timeframes.

Covid-19 vaccination programme: Stakeholder briefing

Thursday 4 March 2021



Gill May,
Director of Nursing and
Quality

“Our vaccination total now stands at more than 315,000, which means we have already vaccinated more than two thirds of all people included in the top nine priority groups as outlined by the Joint Committee on Vaccination and Immunisation.

“This progress has been monumental, and I couldn’t be more proud of every single person who has helped make the rollout of the coronavirus vaccine, which – let’s not forget – is the largest vaccination programme ever undertaken, a success.

“But, for every grand achievement, we know there are always going to be minor sticking points that require us to work that bit harder to overcome.

“This week, we heard from many people in Swindon who were concerned after receiving an invitation to book a vaccine appointment at one of the large centres located out of town.

“We know the prospect of travel can cause many to feel anxious, which is why we have worked hard to share the message that all people contacted by the national booking system will still be contacted by their GP practice with details of how to be vaccinated locally.

“At present, Swindon is well served by vaccine clinics, including two recently-added pharmacy sites in Highworth and Lawn, but we are always looking at what other venues can be introduced to help make the vaccination process as convenient as possible.

“Tonight sees the CCG hold its first Opening Doors event - via Zoom - for people from black, Asian and minority ethnic backgrounds to share their concerns about the vaccine programme.

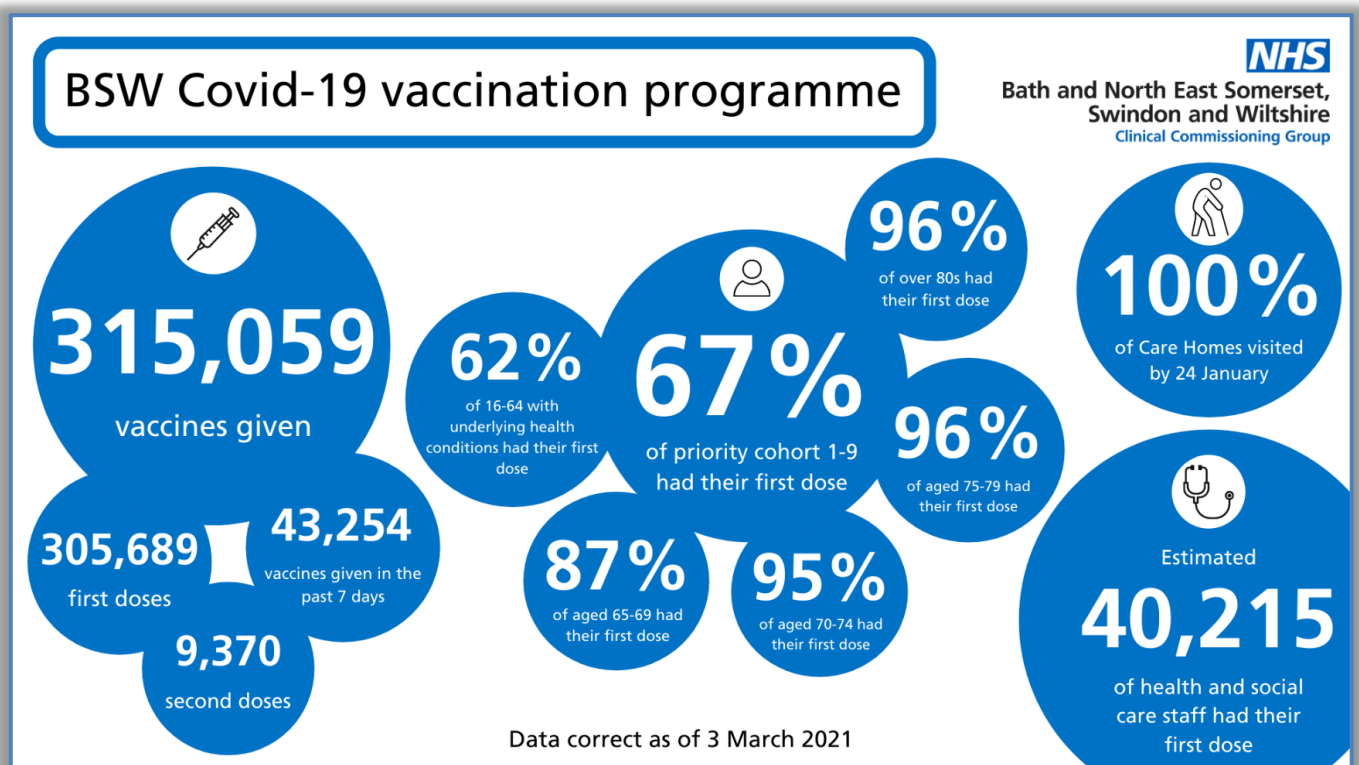
“It is incredibly important for us to hear from people from all walks of life, and I hope you can help us to promote this event to your respective audiences.”

At a glance: the latest coronavirus vaccine developments in BSW

- In the seven days to Wednesday 3 March, our vaccination teams carried out more than 43,000 vaccinations, which took our overall total past the 300,000 mark
- This continued momentum means we have almost completed the vaccination of people in priority group five, and puts us firmly on track to complete the vaccination of people in priority group six this month

- We know that as the vaccination invitation list is widened, we will need to increase capacity. This may involve the introduction of new vaccine sites, as well as exploring the option of administering the vaccine in different ways, such as introducing drive-thru vaccine sites
- Patients who are due to have surgery that requires an overnight stay within the next four weeks will be prioritised and offered a vaccine ahead of their admission to hospital
- We are looking at establishing a vaccinator training programme which, when up and running, will ensure we have a large pool of clinically-trained staff who are able to carry out vaccinations
- Health and care staff across the region who are currently awaiting their second dose will soon be able to book their appointment via a dedicated online booking system
- We have responded to reports of apparent queue-jumping by issuing a warning that any person found to not be currently eligible for the vaccine, but falsely claiming to be so, will be turned away from the vaccination centres

Vaccination programme to date



Amesbury Area Board

18 March 2021

Results of Amesbury Area Board Possible Re-naming Survey

| | Status | Change? | Reason (no Change) | Preferred Option | Alternative | Reason (change) |
|---|----------------|---------|--|-----------------------|-------------|--|
| 1 | Representative | Yes | | Stonehenge Area Board | | Stonehenge is near the centre of the new area, it is a national monument and as such invokes a certain pride for the area. The area shouldn't be named after one town as it suggests the other towns and villages are not really included and an afterthought. |
| 2 | Representative | Yes | | Stonehenge Area Board | | |
| 3 | Representative | Yes | | Stonehenge Area Board | | It more accurately reflects the area it serves |
| 4 | Resident | Yes | | Stonehenge Area Board | | It's a good name and we should recognise the importance of Stonehenge |
| 5 | Resident | Yes | | Stonehenge Area Board | | |
| 6 | Representative | Yes | | Stonehenge Area Board | | It is the identifier for the area which is known World wide while avoiding the suggestion that any single part of the community area has a lead role |
| 7 | Resident | No | The area surrounds Amesbury. Current name appropriate. | | | |

| | | | | | | |
|----|----------------|-----|--|-----------------------|----------------------------------|--|
| 8 | Representative | Yes | | Stonehenge Area Board | | It is a generic name which encompasses the whole area. Small villages on the outskirts will feel that they are included and it might encourage them to attend meetings |
| 9 | Representative | Yes | | Stonehenge Area Board | | Stonehenge is in the centre of the new proposed area boundaries & the name would encompass all the surrounding villages such as ours - Netheravon |
| 10 | Representative | Yes | | Alternative | Salisbury Plain South | Gives location information that is wider than the "Stonehenge" name implies. Also, new road works associated with Stonehenge bypass in the coming years may cause confusion. |
| 11 | Resident | Yes | | Stonehenge Area Board | | Stonehenge is a well-known feature that many local people identify with, is reasonably central to the area and the name does not 'favour' any particular part of the area. |
| 12 | Resident | Yes | | Alternative | Stonehenge Community Area Board | Provides a broad ranging description for the Town & Parish Councils, particularly those to the North, and West of Amesbury. |
| 13 | Representative | Yes | | Stonehenge Area Board | | It apply to the whole area a lot better |
| 14 | Representative | Yes | | Alternative | Avon and Till Valleys Area Board | No one lives at Stonehenge |
| 15 | Resident | Yes | | Stonehenge Area Board | | |

NB - Representative is a representative of a parish council or partner organisation

AMESBURY COMMUNITY AREA TRANSPORT GROUP ACTION NOTES

| 03 | Item | Update | Actions and recommendations | Who |
|--|--------------------------------|---|-----------------------------|-----|
| Date of MS Teams meeting: 26th February 2021 | | | | |
| 1. | Attendees and apologies | | | |
| | | <p>Present:</p> <ul style="list-style-type: none"> Cllr Mike Hewitt – Wiltshire Council Cllr Robert Yuill – Wiltshire Council Cllr Graham Wright – Wiltshire Council Cllr Kevin Daley – Wiltshire Council Cllr Fred Westmoreland – Wiltshire Council Kate Davey – Wiltshire Council Highways Andy Cole – Wiltshire Council Highways Myra Orr – Cholderton Parish Meeting Graham Jenkins – Bulford Parish Council Jenny MacDougall – Wylve Parish Council Steven Cocking – Idmiston Parish Council John Ellis – Durrington Parish Council David Hassett – Shrewton Parish Council Richard Harris – Shrewton Parish Council Charles Penn – Winterbourne Parish Council Rae Owen – Woodford Parish Council Richard Soar – Woodford Parish Council Alex Ginn – Woodford Resident Hazel Conway – Woodford Resident <p>Apologies:</p> <ul style="list-style-type: none"> Debby Potter – Tilshead Parish Council Cllr John Smale – Wiltshire Council Simon Collins – Chemring Countermeasures Ltd Jacqui Abbott – Wiltshire Council CEM | | |

AMESBURY COMMUNITY AREA TRANSPORT GROUP ACTION NOTES

| | | | | |
|-----------|--|--|--|----|
| 2. | Notes of last meeting | | | |
| | | The notes of the last meeting held on 30 th October 2020 were accepted as a true record. | Noted and agreed. | |
| 3. | Financial Position | | | |
| | | See Finance sheet. 2020/21 allocation is £17,731.00. 2019/20 underspend was £31,462.18 and the current commitments total £40,340.00 giving a remaining budget of £17,688.18. | Noted and agreed. | |
| 4. | Top 5 Priority Schemes | | | |
| a) | 1-19-6 Wylle village – Request for 20mph speed limit. | <p>Wylle PC have raised concerns over the speed of traffic through the village where the roads are narrow with no footways so pedestrians are forced to walk in the carriageway to access the village facilities. There are also a number of cyclists as the C10 is a designated cycle route. Request for 20mph speed limit assessment to be undertaken at a cost of £2500. Group agreed to fund the assessment. Wylle PC has confirmed 25% contribution of £625.</p> <p>Wylle PC have asked that the proposed village gate at the eastern end of the village to be removed. New estimate £9,000 (CATG £6,750 (25% contribution = £2,250). Group agreed to fund installation. Wylle PC agreed contribution.</p> <p>TRO consultation period: 28 January – 22 February 2021. Waiting for confirmation whether any comments have been received.</p> | <p><u>ACTION</u> Objection to consultation received therefore a report to the Cabinet Member will be written for consideration.</p> | KD |

AMESBURY COMMUNITY AREA TRANSPORT GROUP ACTION NOTES

| | | | | |
|----|--|--|---|----|
| b) | 1-19-10 Orchard End/MilstonRoad/Bulford Drove, Bulford – horse & rider warning signs | <p>Concerns raised over safety of horse riders in the village of Bulford. Request for installation of warning signs where leaving the roundabout at Orchard End heading toward Bulford Camp/Milston Road and one in Bulford Drove/Drove approaching the village from Bulford Camp.</p> <p>Please see attached to agenda a proposal plan. Cost estimate is in the region of £1,000 (25% contribution = £250). Group agreed funding. Bulford PC agreed contribution via email on 08/11/20.</p> <p>Works to be ordered ready for installation in new financial year.</p> | <p><u>ACTION</u> Arrange for scheme to be installed.</p> | KD |
| c) | 1-20-1 Village gates, Cholderton | <p>Request for white gates at each entrance into Cholderton village and information on process for purchasing/installing a SID in the village.</p> <p>Site meeting undertaken to investigate village gates at the requested locations. Please see attached to end of agenda a proposal plan. The cost estimate for each location is set out below:</p> <p>Location A = Grateley Road - £2,100 (25% contribution = £525). Location B = A338 south – £3,400 (25% contribution = £850). Location C = Amesbury Road - £3,300 (25% contribution = £825). Location D = A338 north - £2,600 (25% contribution = £650). Total estimate = £11,400 (25% contribution = £2,850)</p> <p>Group agreed to fund locations B and D. Cholderton PC have now confirmed contribution towards the entire scheme at all four sites. Group to discuss implementing all 4 sites as only agreed upon 2 locations at the last meeting.</p> | <p><u>DISCUSSION</u> Group agreed to fund all four locations after Cholderton confirmed contribution for all sites.</p> <p><u>ACTION</u> Finalise designs and arrange for implementation.</p> | KD |

AMESBURY COMMUNITY AREA TRANSPORT GROUP ACTION NOTES

| | | | | |
|----|--|--|---|----|
| d) | <p>1-19-11 Footpath that connects the upper back-way to the Methodists Church on the high street, Shrewton. (SHRE22)</p> | <p>During the winter months the route to the village shop/school/ doctors/ bus stop along the back-way becomes very muddy and not user friendly for elderly people with shopping trollies and walking aids and mothers with baby buggies etc and those using electric scooters, all of whom struggle at times to mount the kerb in question either on their way to or back from the village with their shopping.</p> <p>Vehicles block access to the footpath (SHRE22) by parking across the entrance to the path and thus preventing both residents, who live on the path, and anyone else wishing to use the path from doing so.</p> <p>Request for installation of a dropped kerb at the entrance to the footpath that connects the upper back-way to the Methodists Church on the high street. (SHRE22).</p> <p>DW and AC suggested this issue be resolved when the High Street, Shrewton resurfacing works are completed. However, after further investigation this location is some distance away from High Street and therefore it is not suitable to include it with these works. Therefore, I have kept it on the CATG agenda for investigation.</p> <p>Proposal plan attached to agenda. Cost estimate in the region of £2500 (25% contribution = £625). Group agreed to fund scheme. Shrewton PC confirmed contribution via email. Detail design work to be completed and works to be programmed by contractor in new financial year.</p> | <p><u>ACTION</u> Finish design and arrange for scheme to be installed.</p> | KD |
| e) | <p>6543 Church Street, Winterbourne Stoke – request for 20mph speed limit</p> | <p>Request for 20mph speed limit for Church Street area in Winterbourne Stoke. Cost of feasibility study for such request is £2.5k. More information required from Winterbourne PC.</p> | <p><u>ACTION</u> Await outcome of TRO consultation.</p> | |

AMESBURY COMMUNITY AREA TRANSPORT GROUP ACTION NOTES

| | | | | |
|----|---|--|---|---------------------|
| | | <p>Winterbourne Stoke PC have confirmed support & 25% contribution towards 20mph speed limit assessment. Also confirmed residents of Brook Close (not public highway) support its inclusion in any recommended outcome.</p> <p>Group agreed funding for implementation as per assessment recommendation. Implementation cost estimate £5,000 (25% contribution = £1,250). Winterbourne Stoke have confirmed contribution. Residents of Brook Close confirmed agreement to be included in TRO. Group agreed to fund project.</p> <p>TRO consultation period: 25th February – 22nd March 2021.</p> | | |
| f) | 1-20-13 / 1-20-14 Glebe Rd & School Rd Durrington | <p>Request for signing to inform vehicles there is no entry from Glebe Road to College Road. Especially for delivery vehicles following Satnav.</p> <p>Request for signing to inform vehicles there is no entry to Avon Valley College via School Road and road unsuitable for HGVs.</p> <p>Site visit undertaken by KD. Signing plan proposal attached for discussion at the meeting. Estimate £500 (CATG £375, 25% contribution £125).</p> | <p>ACTION Re-evaluate signing proposal.</p> <p>Arrange virtual meeting with Cllr Wright, Richard Harris and I to discuss suitable outcome.</p> | <p>KD</p> <p>KD</p> |
| g) | 1-20-15 Durrington 20mph speed limit assessment | <p>The Roads listed below are without adequate footways and sit within the Conservation Area of the oldest parts of Durrington Village. These areas were never designed for modern traffic volumes and without footways pedestrians are at higher risk than other parts of the village.</p> <p>Roads to be included in 20mph assessment are: Hackthorne Road (full length) which leads to Church Street (full length) which leads to The Ham (no through rd). The north end of Bulford</p> | <p>ACTION Amend plan for extent of 20mph speed limit to be assessed and progress when Covid-19 restrictions allow.</p> | <p>KD</p> |

AMESBURY COMMUNITY AREA TRANSPORT GROUP ACTION NOTES

| | | | | |
|-----------|--|---|--|--|
| | | <p>Road (from jnctn Church St to Glebe Road to include School Rd which is also a no through rd). College Rd (full length). High Street from junction of Church Street to Ridgmount.</p> <p>Group agreed to fund 20mph assessment at £2,500. Durrington TC agreed 25% contribution of £625.</p> <p>Site visit undertaken by KD and traffic survey sites located. No order for the survey work has been placed yet due to Covid-19 lockdown restrictions. This work will be resumed when restrictions are eased.</p> | | |
| 5. | Other Priority schemes | | | |
| a) | <p>5794</p> <p>Telegraph Hill/Salisbury Road, Bulford</p> <p>7.5t weight restriction</p> | <p>At the bottom of the hill just entering the village it is dangerous if not impossible for 2 heavy vehicles to pass, e.g. double decker bus, articulated lorry, tracked vehicle.</p> <p>No further action can be taken until FAPM process has been reviewed. Group agreed to keep issue open. Refer to freight management update attached to this agenda for more information.</p> <p>Bulford PC requested that the action be with them to supply details to be sent to Spencer Drinkwater. KD chased Spencer Drinkwater for LTP4 completion date April 2020.</p> <p>Due to Covid-19 pandemic resource has been allocated to the response and therefore the LTP4 is currently in the development phase, no formal timescale for completion given yet.</p> | <p>DISCUSSION Cllr Robert Yuill is still waiting for a response to his letter. Bulford PC are also still waiting for a response from the Leader of Wiltshire Council.</p> | |

AMESBURY COMMUNITY AREA TRANSPORT GROUP ACTION NOTES

| | | | | |
|----|--|--|---|----|
| | | Cllr Smale and Bulford PC confirmed this is still an issue and is getting increasing worse. Area Board to write to Wiltshire Council for a decision. Area Board chair to provide update at the meeting. | | |
| b) | 5795 A3028 from Double Hedges approaching new roundabout - No waiting at any time | <p>A new path has been introduced between Bulford and Solstice Park Amesbury. Accordingly the approach pavement at the Bulford end has been widened parking bays marked on the opposite side of the road and a preferred crossing installed. People are now parking half on the kerb adjacent to this crossing vert near to the junction which is particularly dangerous.</p> <p>BPC asked for this scheme to be put on hold until the outcome of discussions with DIO regarding S106 works in the village.</p> <p>Process for requesting waiting restrictions is for the Town/Parish Council to complete request form and submit to Network Management for assessment when next review is completed. Group agreed for this issue to be left open for now.</p> <p>AC confirmed waiting restrictions are not proposed as part of the works. JA invited project manager from DIO to attend Area Board meeting. Group agreed to leave this on the agenda for now, Bulford PC to resolve at strategic level.</p> <p>KD has resubmitted requests and response received from Network Management Nov 2020 regarding waiting restrictions reviews:</p> <p>As far as a future review, I'm aiming at getting all requests together and designed up if restrictions are considered appropriate by the end of the year, with any consultation in the New Year. But I'll be doing a communication out to Towns/Parishes separately on that.</p> | <p><u>DISCUSSION</u> AC confirmed double mini roundabout is now public highway.</p> <p>Pedestrian survey to be carried out post lockdown but currently unclear as to who will complete.</p> <p><u>ACTION</u> Chase Network Management for an update of waiting restrictions review.</p> | KD |

AMESBURY COMMUNITY AREA TRANSPORT GROUP ACTION NOTES

| | | | | |
|----|--|---|---|-----------------------|
| c) | 1-20-2 Avon Lodge Vets, Flower Lane, Amesbury | <p>Request for direction signs to the veterinary surgery to be erected opposite the junction to Flower Lane to aid the public when trying to find the practice.</p> <p>Amesbury TC have confirmed they withdraw their support for this request via email on 18/12/20. Recommend this item is removed from agenda.</p> | <p><u>DISCUSSION</u> Group agreed to close issue.</p> <p><u>ACTION</u> Remove from agenda.</p> | KD |
| d) | 1-20-5 Stonehenge Road, Amesbury | <p>The 40 mph zone in Stonehenge Road is dangerous because of the blind bend and crest. Motorists travelling west and cars exiting their drives cannot see each other until it is too late to brake safely. Also, motorists frustrated by the traffic jam on the A303 tend to accelerate up Stonehenge Rd exceeding the speed limits. The 40 mph zone is 600m long. There are 18 drives directly onto the road. These serve 21 houses with frontage directly onto the road, thus meeting the criteria for a 30 mph speed limit as stated in Traffic Advisory Leaflet 01/04.</p> <p>Request for the 40 mph zone to be removed, making the whole of the residential section of Stonehenge Road a 30 mph zone, finishing at the current National Speed Limit sign.</p> <p>Amesbury TC have confirmed their support for this issue via email on 18/12/20. The cost of a speed limit review is £2,500. (£1,875 CATG and 25% contribution of £625 from local council). To be discussed at this meeting.</p> | <p><u>DISCUSSION</u> Highway officers report this will not meet the criteria for a 30mph speed limit. Cllr Robert Yuill, Cllr Fred Westmoreland and Cllr Kevin Daley are not supportive of funding a speed limit review.</p> <p><u>ACTIONS</u> Close issue and remove from agenda.</p> <p>Inform requester.</p> | KD Amesbury TC |
| e) | 1-20-3 East Gomeldon Road, Idmiston | <p>Safety concerns for the approach to the railway arch heading south on East Gomeldon Road. Request for road side mirror, traffic signals, reinstatement of give way marking.</p> | <p><u>ACTION</u> Leave on agenda for progression when space on the top 5 priority list becomes available.</p> | KD |

AMESBURY COMMUNITY AREA TRANSPORT GROUP ACTION NOTES

| | | | | |
|----|---|---|---|--|
| | | <p>It is accepted that Wiltshire Council policy does not allow mirrors on the public highway. The request form details that traffic signals have been informally explored and not pursued due to expense.</p> <p>Request to reinstate give way marking for vehicles heading south towards the railway arch.</p> <p>Site visit undertaken by KD. Observations are that current signing and road markings are very worn. There is scope to reposition the signing to be more visible to approaching traffic and enhance the road markings if the group wish to make this a top priority. However some of these signs require illumination so there will be electrical costs involved in any amendment to the signing at this location.</p> <p>To be discussed at the meeting.</p> | | |
| f) | 1-20-4 A338 Porton Village, Idmiston | <p>The speed limit approach the 30mph limit in both directions is 50mph, which gives drivers insufficient time to reduce their speed to enter the 30mph limit at or below 30mph, thus endangering pedestrians on the narrow pavements, particularly at the Tidworth end of the village.</p> <p>The Parish Council would like the speed limits on the A338 at both these approaches to Porton village to be reviewed, and a staggered reduction in speed limits introduced. For example, by extending the current 40mph limit which begins at the Earl of Normanton to the 30mph limit, as it makes little sense for the limit to change from 50mph to 40 mph to 50 mph to 30 mph.</p> <p>Group not supportive of funding a speed limit review at this location.</p> <p>Site visit undertaken by KD to investigate advance signing options for this location. Unfortunately the regulations do not permit the use of</p> | <p>DISCUSSION</p> <p>PC asked for advice on what else can be done to improve this situation. All considered solution would need to be on a larger scale to widen carriageway and/or footway. This is outside to scope of what the CATG and substantive bid funding can offer. This would need to be investigated at a strategic level.</p> | |

AMESBURY COMMUNITY AREA TRANSPORT GROUP ACTION NOTES

| | | | | |
|----|------------------------------------|--|---|--|
| | | <p>advance signing for speed limit changes. There is no provision of such signs in the TSRGD 2016. The TSM chapter 3 also states 'countdown signs giving advance indication of a speed limit are not prescribed and must not be used'.</p> <p>KD checked visibility requirements to the 30mph speed limit signs which do meet the criteria on both approaches.</p> <p>To be discussed further at the meeting.</p> | | |
| g) | 1-20-6 High Post Road, Durnford | <p>Speeding traffic from the A345 traffic lights at High Post down to Netton, particularly past the Chemring factory. Employees from the factory and suppliers find exiting and entering the site entrances dangerous due to vehicles speeding. The volume of traffic on this road continues to increase thanks to the residential developments on the outskirts of Salisbury adjacent to the A345 and A360. It will increase even further with the approval of the enlarged salt store and Naish factory planning applications. The speed limit on this road is the national speed limit – 60mph.</p> <p>Request for a site visit and discussion with Chemring and PC to investigate possibility of traffic calming measures in the vicinity of the factory entrance.</p> <p>Cllr Mike Hewitt agreed to follow this up with the company Chemring. Update to be provided at the meeting.</p> | <p><u>DISCUSSION</u></p> <p>Considered the new development. PC to flag this issue up at the planning stage to see if anything can be incorporated in development funding.</p> <p>Still believe the main issue is Chemring employees at finishing time. Rest of the day road is quiet and easy to use. Cllr Yuill has written to company and the police have also spoken with them.</p> <p>Suggestion to cut off entrance to petrol station and stop vehicles driving straight through.</p> | |

AMESBURY COMMUNITY AREA TRANSPORT GROUP ACTION NOTES

| 6. | New Requests / Issues | | | |
|----|----------------------------------|---|--|-------------|
| a) | 1-20-16 Idmiston Road, Porton | <p>Concealed entrances at top of hill for drivers travelling from Idmiston village to Porton village, including an active farm access, village hall access and residential accesses.</p> <p>Request for warning sign – “Concealed entrances” located towards the bottom of the hill facing the oncoming traffic from Idmiston village.</p> <p>Unfortunately there is no sign of this nature prescribed in the regulations.</p> | <p><u>DISCUSSION</u> Request for further information on any other warning signs which may be used.</p> <p><u>ACTION</u> Check regulations and report back.</p> | KD |
| b) | 1-21-1 Gomeldon Road, Porton | <p>Lack of pavement along the length of Gomeldon Road from the junction with Winterslow Road Porton. Parents with young children can and do walk along the road to Gomeldon school, and it is particularly dangerous where the road narrows near the junction with the lower road leading from the High St, Porton.</p> <p>Request for warning sign – showing an adult holding a child’s hand located below the “Road Narrows” sign on the Gomeldon Road.</p> | <p><u>ACTION</u> Idmiston representative to refer this back to PC for clarification on issue and support.</p> | Idmiston PC |
| c) | 1-21-2 London Road, Shrewton | <p>The Parish Council would like the removal of the redundant bus stop sign outside nos. 3 & 4 London Road and replace it with a longer pole to enable a SID and solar panel to be mounted.</p> | <p><u>DISCUSSION</u> Consider PC funding this project themselves.</p> <p><u>ACTION</u> Parsh Clerk to write to Andy Cole in order to confirm he has no objections.</p> | Shrewton PC |

AMESBURY COMMUNITY AREA TRANSPORT GROUP ACTION NOTES

| | | | | |
|----|------------------------------------|---|--|----|
| d) | 1-21-3 London Road, Amesbury | <p>Broken bus shelter. The bus shelter was damaged by a vehicle several years ago and remains in a bad state of disrepair, affording no weather protection for anyone who is waiting there and inviting potential acts of vandalism. The worsening condition of the shelter gives a bad impression of the town and of the apparent disregard by the council.</p> <p>The Town Council wishes for the bus shelter to be replaced.</p> | <p><u>DICUSSION</u> Cllr Westmoreland confirmed shelter was hit some time ago and this issue has been held up for a while. Discussion on whether CATG should fund as removal is maintenance. If enhanced shelter is erected could be considered as new improvement project. To be discussed further after costs are know.</p> <p><u>ACTION</u> Cost estimate for removal and replace of shelter to Amesbury TC for review.</p> | KD |
| e) | 1-21-4 Salisbury Road, Amesbury | <p>Residents concerns over speeding within a 30mph speed limit. Have seen a recent increase in speeding vehicles which is dangerous in a residential area.</p> <p>Request for speed camera. Wiltshire Council policy does not allow for permanent speed cameras to be installed. If a traffic survey request is submitted to our road safety team and the area meets the criteria either SID deployment or Community Speed Watch can be considered.</p> | <p><u>DISCUSSION</u> Cllr Westmoreland confirmed this is already a site for SID deployment.</p> | |

AMESBURY COMMUNITY AREA TRANSPORT GROUP ACTION NOTES

| | | | | |
|----|---|--|---|----|
| f) | 1-21-5 B3083 between A303 and Berwick St James | <p>The southern B3083 runs from the A303 in the north at Winterbourne Stoke and travels in a general southwards direction through Berwick St James and onwards towards Stapleford where it joins the A36. The subject of this letter is the section between Winterbourne Stoke and Berwick St James and, the area either side of the junction between the B3083 and the public footpaths known as WST01/BSJA6.</p> <p>Please refer to item attached to agenda for full details of issues and request for new infrastructure. To be discussed at the meeting.</p> | <p><u>DISCUSSION</u> Defer to next meeting and request a representative is present to discuss the issue further.</p> | |
| h) | 1-21-6 Bulford Road, Durrington | <p>To replace the amber flashing lights at the zebra crossing on Bulford Road outside Lloyds chemist and Nisa store. The Wiltshire councillor has received several complaints that they are not bright enough.</p> <p>Replace the bulbs with LED ones. In the first instance this issue should be logged via MyWilts app as an upgrade to existing infrastructure to enable the street lighting team to assess requirements.</p> | <p><u>ACTION</u> Check with Atkins if this can be easily arranged by them. If not, find out costs and report back.</p> | KD |
| i) | 1-21-7 High Street, Shrewton | <p>This request has been received from a resident as vehicles regularly park on the virtual footway, making it difficult for those with mobility issues, mobility vehicles and pushchairs to enter the Co-op shop. The Parish Council support the request and would like to put it forward for consideration.</p> <p>If there is no possibility of a proper raised footpath at the Co-op, then would it be possible for an alternative colour of tarmac/ surface to be used - similar to that which is used at the entrances and exits to the village on the main highways?</p> <p>That the outer (road edge) of this pathway should have some form of bollards, examples of which can be found at both the Tesco (Amesbury) and Waitrose shops, that mark off the pedestrian areas.</p> | <p><u>DISCUSSION</u> On resurfacing of High Street in new financial year. Cllr Daley supports issue. AC confirmed not wide enough for physical barrier.</p> <p><u>ACTION</u> Include request for coloured surfacing for the virtual footway when resurfacing works are completed.</p> | AC |

AMESBURY COMMUNITY AREA TRANSPORT GROUP ACTION NOTES

| | | | | |
|----|---|---|---|----|
| j) | 1-21-8 Redworth Drive, Amesbury | <p>A pedestrian pathway is being used by motor vehicles presenting a risk to pedestrians using the pathway and impacting on the structural integrity of the walls surrounding the path.</p> <p>The path runs along the side of a residential house providing front-door access to four houses and also links the Archers Gate development to an older development. Vehicles are now increasingly using the pathway – takeaway delivery drivers and property maintenance companies looking after the four houses.</p> <p>The entrance to the pathway has a dropped kerb and is wide enough for a transit van. The dropped kerb would have been put in place to support buggies and disability scooters but unlike other similar pathways on Archers Gate no protection was put in place to stop vehicles using the path.</p> <p>Request for small bollard at the entrance to the pathway would stop vehicles accessing the pathway. Unfortunately, a simple no access sign is likely to be missed or ignored. The bollard would still allow use of the path by pushchairs and disability scooters.</p> | <p><u>DISCUSSION</u> Cllr Yuill and group as a whole are supportive of this issue.</p> <p><u>ACTION</u> Leave on agenda for progression when space on the top 5 priority list becomes available.</p> | KD |
| k) | 1-21-10 C42 Heale Hill, Upper Woodford | <p>Extreme danger to pedestrians using Heale Hill to travel between Upper and Middle Woodford. The road is narrow, with a blind right hand bend ascending, left hand bend descending, speed limit increased to 40mph on leaving 30mph limits in U and M Woodford.</p> <p>There is no footpath. Neither is there the option for pedestrians to move out of harm's way when large vehicles are passing on this narrow road. Traffic through the Woodford Valley increases year on year as more residential developments take place on the outskirts of Salisbury, and the C42 is used as a 'rat run' for employees of Chemring, Porton Down, Boscombe Down, etc.</p> | <p><u>DISCUSSION</u> On 1-21-10, 1-21-11 and 1-21-12. PC and residents explained concerns over speeding traffic and lack of footways. All agreed to take a holistic approach to combine the Woodford issues and firstly look at speed limit review throughout Woodford</p> | |

AMESBURY COMMUNITY AREA TRANSPORT GROUP ACTION NOTES

| | | | | |
|----|---------------------------|--|--|------------------------------|
| | | Request for the speed limit between U and M Woodford to be reduced from 40mph to a continuous 30mph. Request for the undergrowth to be cleared roadside of the railings to make room for a narrow footway, and a white line painted to indicate the width of the footway. | <p>Valley. Group agreed to fund assessment at £2,500 subject to Woodford PC contribution of 25%, TBC.</p> <p>AC suggested PC instruct parish steward to look at clearing undergrowth by railings.</p> <p><u>ACTION</u> Arrange site visit with PC for confirm extent of review before brief is sent to consultant. This will take place once lockdown restrictions are eased.</p> <p>Build evidence document to present with brief to consultant.</p> | <p>KD</p> <p>Woodford PC</p> |
| i) | 1-21-11 Lower Woodford | Speeding on the C42 in Lower Woodford, and therefore danger to pedestrians. Lower Woodford unfortunately has 5 blind bends, no pavements and the majority of traffic go round those bends at over 30 miles an hour and 40 plus on the straights. They do not slow down when overtaking pedestrians and have forced pedestrians to jump into hedges. The daily commute for children is getting increasingly dangerous as cars attempt to overtake the bus as it stops to collect and drop off. This is making parents in the village extremely nervous. Due to the increased traffic, locals no longer feel safe walking on the | <p><u>ACTION</u> See above comments.</p> | |

AMESBURY COMMUNITY AREA TRANSPORT GROUP ACTION NOTES

| | | | | |
|-----------|-------------------------------|---|---|--|
| | | <p>road. In Lower Woodford alone, there are 13 children under the age of 13 (6 of which are under the age of 7 years) that cannot safely walk or cycle on the road.</p> <p>As the village is used as a rat-run for the growing traffic this is having a negative impact on the residents of the village. We would like to have the speed limit reduced to 20mph in Lower Woodford and 30mph throughout the valley.</p> | | |
| j) | 1-21-12 C42 Upper Woodford | <p>The frequency of vehicular traffic using the C42 seems to increase steadily. During this Covid-19 summer and autumn there has been an increase in pedestrian use of the C42, by locals and visitors, between Upper and Middle Woodford for journeys to and from the Woodford Valley Primary Academy (the school), The Bridge Inn or for recreational walking. Upper Woodford has almost no pavements. Parents walking children to and from the school are considered to be the most vulnerable pedestrians. Pre-emptive measures should be taken to reduce risk of pedestrian road traffic accidents.</p> <p>Request for virtual pavements on C42 east along hill upto Heale House and west side from Chestnut Cottage to 30mph speed limit terminal sign.</p> | <u>ACTION</u> See above comments. | |
| 7. | Any other business | | | |
| a) | Area Board Meeting: | TBC - subject to Covid-19 restrictions. | | |

AMESBURY COMMUNITY AREA TRANSPORT GROUP ACTION NOTES

Amesbury Community Area Transport Group

Highways Officer – Kate Davey

1. Environmental & Community Implications

1.1. Environmental and community implications were considered by the CATG during their deliberations. The funding of projects will contribute to the continuance and/or improvement of environmental, social and community wellbeing in the community area, the extent and specifics of which will be dependent upon the individual project.

2. Financial Implications

2.1. All decisions must fall within the Highways funding allocated to Amesbury Area Board.

2.2. If funding is allocated in line with CATG recommendations outlined in this report, and all relevant 3rd party contributions are confirmed, Amesbury Area Board will have a remaining Highways funding balance of **£17,688.18**.

3. Legal Implications

3.1. There are no specific legal implications related to this report.

4. HR Implications

4.1. There are no specific HR implications related to this report.

5. Equality and Inclusion Implications

5.1 The schemes recommended to the Area Board will improve road safety for all users of the highway.

6. Safeguarding implications

6.1 There are no specific safeguarding implications related to this report.

Amesbury CATG

FINANCIAL SUMMARY

BUDGET 20-21

£17,731.00 CATG ALLOCATION 20-21

£31,462.18 2019-20 underspend

Contributions

| | | |
|--|-----------|-----------|
| Winterbourne Stoke PC 20mph speed limit implementation | £1,250.00 | Confirmed |
| Wylve PC for 20mph speed limit assessment | £625.00 | Invoiced |
| Shrewton PC - The Packway Horse Warning Signs | £85.00 | Invoiced |
| Shrewton PC - Rollestone Crossroads Military Vehicle signing | £150.00 | Rejected |
| Bulford PC - Horse Warning Signs | £250.00 | Confirmed |
| Shrewton PC - Upper Backway dropped kerbs | £625.00 | Confirmed |
| Cholderton Parish Meeting - village gates | £2,850.00 | TBC |
| Wylve PC for 20mph speed limit implementation | £2,250.00 | Confirmed |
| Durrington PC - Glebe Rd/School Rd signing | £125.00 | TBC |
| Durrington PC - 20mph speed limit assessment | £625.00 | Confirmed |

Total Budget

£58,028.18

Commitments carried forward

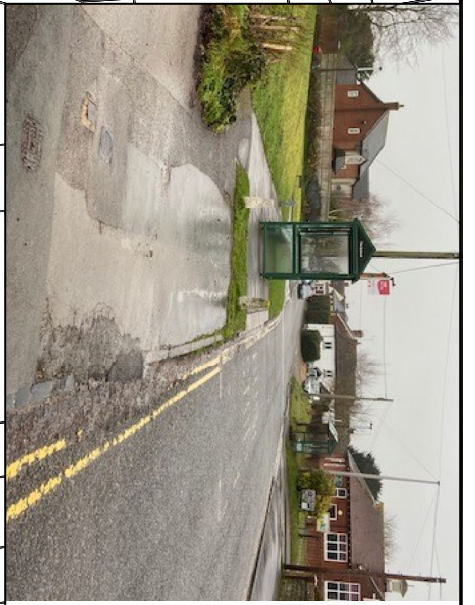
| | | |
|---|--------|----------|
| Street namplates | £5,000 | Estimate |
| Winterbourne Stoke 20mph speed limit implementation | £5,000 | Estimate |
| Wylve 20mph speed limit assessment | £2,500 | Actual |
| Shrewton The Packway Horse warning sign amendments | £340 | Actual |
| Rollestone crossroads review of military signs | £600 | Rejected |

New schemes

| | | |
|---|---------|----------|
| Bulford Horse Warning signs | £1,000 | Estimate |
| Shrewton Upper Backway dropped kerbs | £2,500 | Estimate |
| Cholderton village gates | £11,400 | Estimate |
| Wylve 20mph Speed Limit implementation | £9,000 | Estimate |
| Durrington Glebe Rd/School Rd signing | £500 | Estimate |
| Durrington 20mph speed limit assessment | £2,500 | Estimate |

Total commitment **£40,340.00**

Remaining Budget **£17,688.18**



NOTES:

**SIGN DESIGN
INDICATIVE ONLY**

This map is reproduced from Ordnance Survey material with the permission of Her Majesty's Stationery Office
© Crown copyright.
Unauthorised reproduction infringes Crown Copyright and may lead to prosecution or Civil Proceedings.
Wiltshire Council (10004909) 2021



Traffic & Network Management
County Hall, Bythesea Road, Trowbridge
Wiltshire, BA14 8UD
Tel: 0300 4560100
Website: www.wiltshire.gov.uk

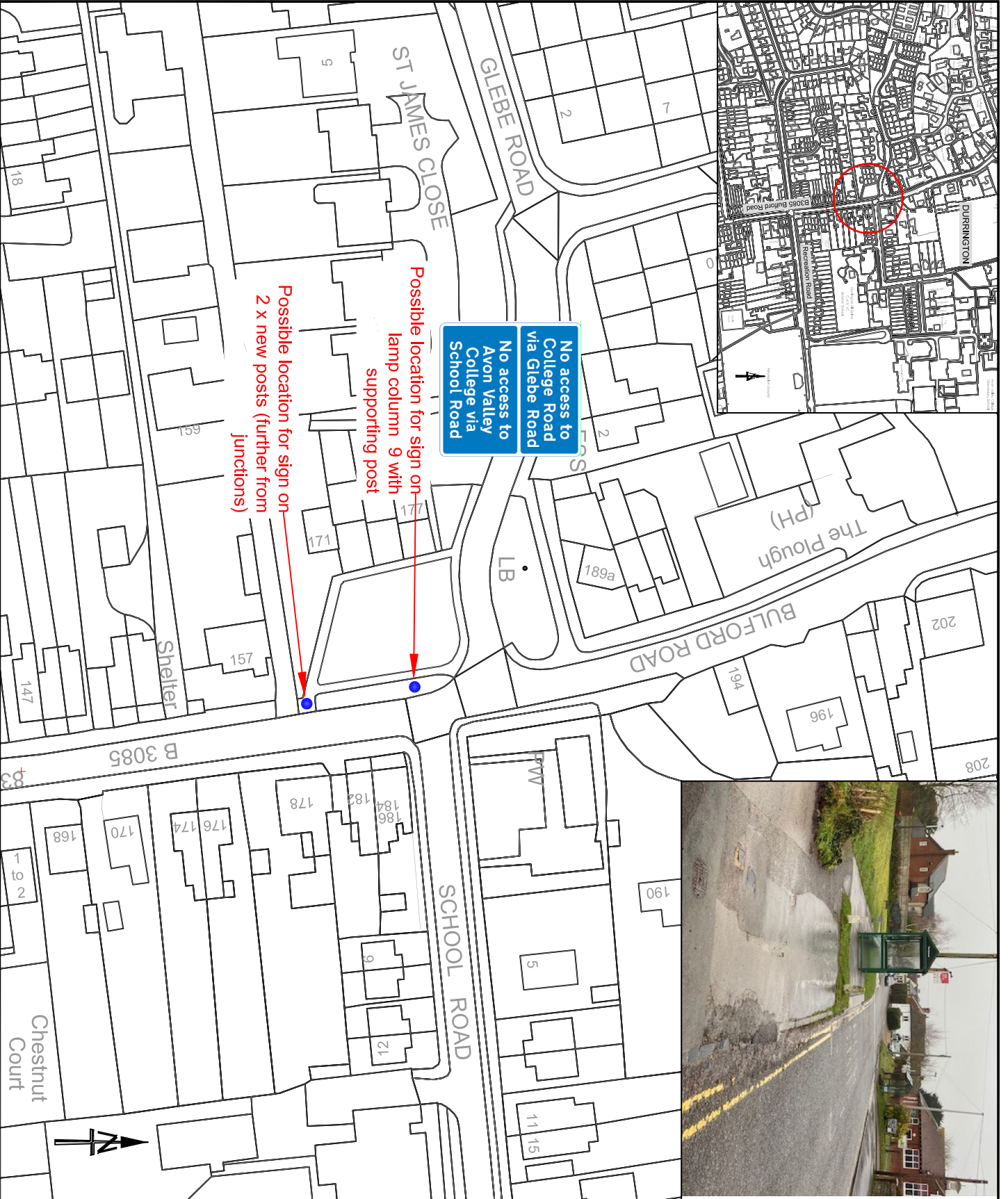
| REV | DATE | DESIGNED | CHECKED | APPROVED | DESCRIPTION |
|-----|------|----------|---------|----------|-------------|
| A | | | | | |
| B | | | | | |
| C | | | | | |
| D | | | | | |
| E | | | | | |
| F | | | | | |

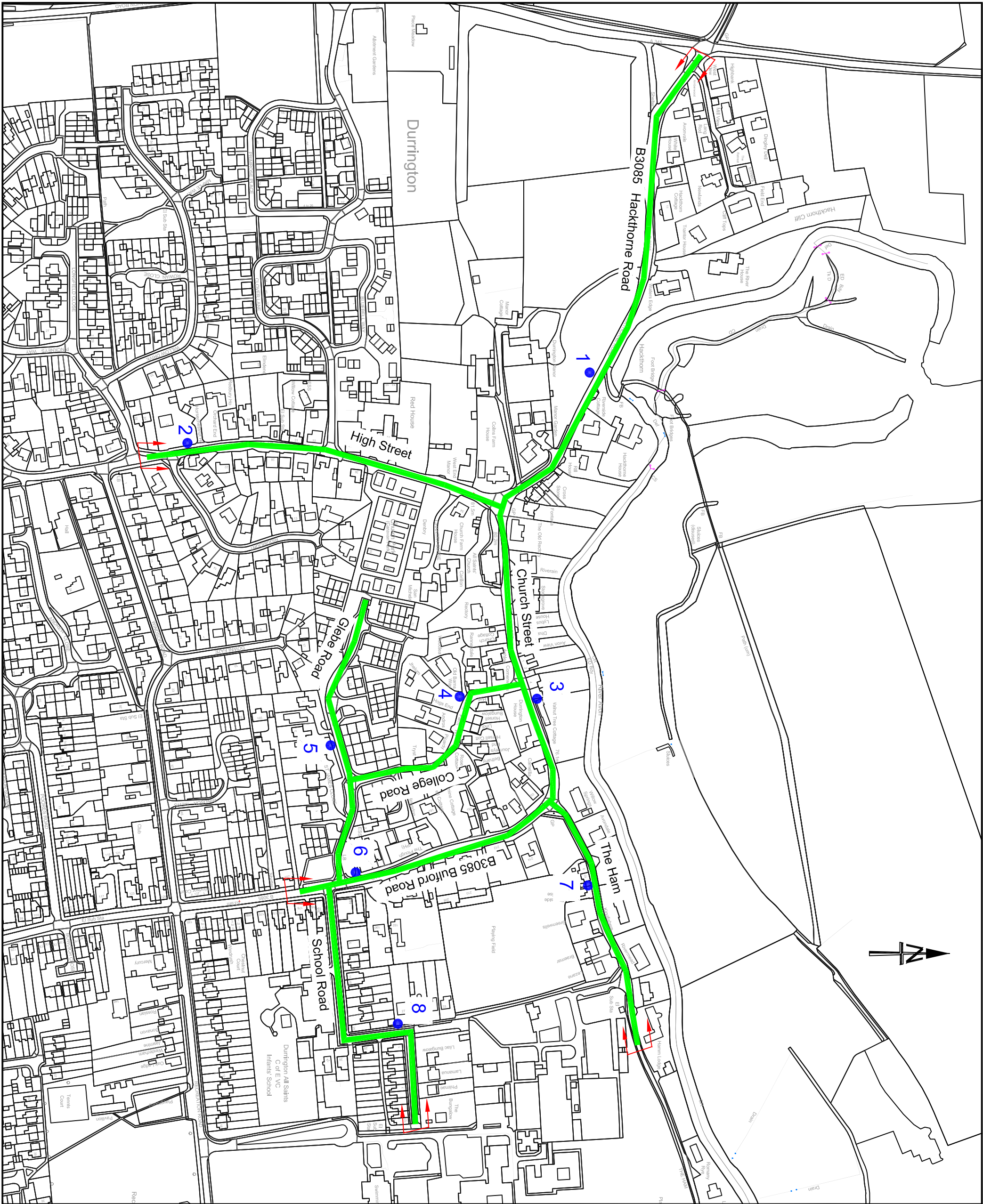
DRAWING PURPOSE:
PRELIM DESIGN

PROJECT:
**AMESBURY CATG SCHEME
BULFORD ROAD DURRINGTON
SIGNING**

DRAWING TITLE:
PRELIM DESIGN

| SCALES | NOT TO SCALE | SHEET SIZE: | A4 |
|-------------|---|-------------|----|
| DRAWING NO: | 2020-147(KAD)DURR001 | REVISION: | 0 |
| FILE REF: | L:\TEMP\AMESCAT02021\047DURR001\CPROD\SIGNING\INDIC.DWG | | |





NOTES:

TRAFFIC SURVEY COUNTER LOCATIONS

1. Hackthorne Road - Telegraph pole 863917.
2. High Street - Warning sign north of Ridgemoort.
3. Church Street - Warning sign east of College Road.
4. College Road - Telegraph pole on corner outside Old Barns Way..
5. Glebe Road - Lamp column 1 opposite House No. 6.
6. Bulford Road - Concrete lamp column No. 48.
7. The Ham - Telegraph pole outside No. 10.
8. School Road - Telegraph pole outside No. 27.



This map is reproduced from Ordnance Survey material with the permission of Ordnance Survey on behalf of the Controller of Her Majesty's Stationery Office
 © Crown copyright.
 Unauthorised reproduction infringes Crown Copyright and may lead to prosecution or Civil Proceedings.
 Wiltshire Council (100049050) 2021



Traffic & Network Management
 County Hall, Bytchesa Road, Trowbridge
 Wiltshire, BA14 8JD
 Tel: 0300 4500100
 Website: www.wiltshire.gov.uk

| REV | DATE | DRAWN | CHECK | APPRV | DESCRIPTION |
|-----|--------|-------|-------|-------|-------------|
| 0 | FEB 21 | KAD | GTR | GTR | ORIGINAL |
| A | | | | | |
| B | | | | | |
| C | | | | | |
| D | | | | | |
| E | | | | | |
| F | | | | | |

TRAFFIC SURVEY PLAN

PROJECT:
 AMESBURY CATG SCHEME
 DURRINGTON 20MPH SPEED LIMIT ASSESSMENT

DRAWING TITLE:
 TRAFFIC SURVEY PLAN

| | | | |
|-------------|--|-------------|----|
| SCALES: | NTS | SHEET SIZE: | A3 |
| DRAWING No. | 2020-148/KAD/DURR/D0014 | REVISION: | 0 |
| FILE REF: | L:\T\TAB\AMES\GATG2021\DIRR20\ASSESSMENT | | |

Highways Improvement Request Form

Contact Details

| | | | |
|-----------------------|---|--------------|------------|
| Name: | James Carr | Date: | 22/01/2021 |
| Address: | 1 Cleeve View, Winterbourne Stoke, Salisbury, SP3 4SY | | |
| Telephone No: | 07973 366762 | | |
| Email Address: | clerk@winterbournestokepc.org.uk | | |

Issue Details

| | |
|--|---|
| Location of Issue: | B3083 between the A303 and Berwick St James |
| Community Area: | Amesbury |
| Parish or Town Council: | Winterbourne Stoke |
| Nature of Issue: | |
| Narrative provided by Cllr Dr Andrew Shuttleworth | |
| <p>The southern B3083 runs from the A303 in the north at Winterbourne Stoke and travels in a general southwards direction through Berwick St James and onwards towards Stapleford where it joins the A36. The subject of this letter is the section between Winterbourne Stoke and Berwick St James and, the area either side of the junction between the B3083 and the public footpaths known as WST01/BSJA6. Historically, the footpath then continued south westwards into Berwick St James and old mapping makes clear it pre-dates the creation of the B3083 and the start of British road classification in 1913. So that section of the road is now both a footpath and a "B" road.</p> <p>It is one of two routes south from Winterbourne Stoke to Berwick St James and the most popular of the two when going to and from the Boot Inn and the Farm Shop in Berwick St James. It is frequently used by pedestrians, often unfamiliar with the local area, from the Stonehenge campsite that is at the Northern end of this part of the B3083. The B3083 is also used regularly by cyclists and equestrians.</p> <p>The problem lies in the section of the B3083 from its intersection with WST01/ BSJA6 round the blind bend to the south-east and a similar distance to the south-west from the apex of the bend. This section of the road is around 4 metres wide and carries a 50mph speed-limit. What is not apparent from the map are the poor sight-lines of the road, the changes in elevation that restrict a motorists vision, the lack of a usable verge (particularly on the western side of the road where the verge is near vertical and goes up above head height) and the adverse camber.</p> <p>The following series of photos taken from Google Earth show a number of views of the road. Firstly, looking generally south and travelling up-hill towards the road-footpath junction - which is right on the brow of the hill/skyline.</p> | |



The verges on both sides are Wiltshire Council wild-flower banks. Pretty, but they do interfere with sight-lines for much of the year; especially in summer when footpath usage is greatest. The SLOW road marking and the sharpened sign are immediately adjacent to where a kissing gate (hit and damaged by a vehicle in 2020) from WST01/BSJA6 joins the B3083. The SLOW sign is inappropriately placed to mark the bend and useless to slow the traffic for pedestrians. Stopping distance at 50mph is 38metres (125 ft), so you would expect the both the SLOW road markings and the bend advisory sign to be in a position to allow a driver to react safely within their stopping distance. Given the high probability that a pedestrian might step out from the kissing gate, the slow sign needs to be at least 38m/125ft north of its current position.

The next photo shows the view at the top of the hill, the adverse camber to the left and the immediacy of the right hand bend. As they approach the bend uphill, a driver may not see pedestrians even a few metres south of the kissing gate. Few slow for the bend and when they realise pedestrians are there, they are confronted with a sharp bend.



Pedestrians travelling south tend to keep to the eastern side of the road and not face the oncoming traffic because of the obvious danger posed by the high verge, the non-existent sightline and the sharp bend.

The view approaching the same bend from the south (Berwick St James) looks as follows.



The view ahead is quite good and pedestrians, cyclists and equestrians can be seen on both sides of the road. Again, the road section is posted at 50mph.



Going uphill and approaching the left-hand bend, pedestrians, cyclists and equestrians could easily be seen on the eastern side of the road (offside), but the nature of the bend means that very little can be seen on the nearside after the bend starts. Because of the steepness, that is the very point that cyclists and equestrians will be travelling at their slowest. The steepness of the bank (not readily apparent in these photos), means that there is no escape route for slow moving road users to the nearside (west) and so they are very susceptible to being rear-ended by fast-moving vehicular traffic.



Only after the northbound traffic clears the apex of the bend, and the summit close to the kissing gate, do drivers get a clear view of the road ahead.

Please note that in all the previous photos, the viewpoint is that of a camera mounted atop a Google camera car - as shown below. Consequently, the viewpoint is 2 to 2.5 times higher, and consequently much better, than would be the case for car drivers!



360

The Problem

Over the last couple of years the southern B3083 has become a rat-running route between the A303 and A36. This traffic is likely to increase still further in coming years and may only be relieved if the A303 Stonehenge to Berwick Down Scheme goes ahead.

The traffic that uses the B3083 rarely adheres to the 50mph speed limit along the section of concern. Villagers are increasingly reporting 'near-misses' on this section of road, with vehicular traffic failing to slow - even to the speed limit, leave reasonable room when passing pedestrians, or passing/over-taking cyclists and equestrians or using signals. All these are requirements of the Highway Code.

The Highway Code makes clear that vehicle drivers should be leaving adequate room (it pictorially indicates a cars width) when passing pedestrians, etc. Proposed changes to the Highway Code seek to enshrine this concept as actual distances. A minimum of 1.5 metres for vehicles travelling at 30mph or less and a minimum of 2 metres for vehicles travelling at over 30mph, but under 50mph. The requirement to slow down and indicate a proposed vehicle movement will remain unchanged.

On the B3083, the current and proposed Rules have a similar consequence, vehicles passing pedestrians, equestrians and cyclists should be doing so with their vehicle entirely in the other carriageway and slowing as they pass. Because of the poor sight-lines, sharp bend, adverse camber, inappropriate road marking and an overly high speed limit, drivers rarely comply and frequently drive at other non-motorised road users.

Equestrians and cyclists have been forced off the road by Wiltshire Red Buses and pedestrians/dog walkers are regularly intimidated by car drivers and taxis - often locals from other nearby villages - professional HGV drivers and campers in camper vans are by far the safest motorised users encountered.

Incidents are being reported to the police, but it is often difficult to get a car number because of the speed of the vehicle involved and equestrians and cyclists are rarely in a position to write something down. The police rarely show interest.

However, pedestrians as well as cyclists and equestrians are increasingly carrying cameras to record incidents. I reported one such incident on the B3083 involving a bus to Wiltshire Reds last year and was assured that action was taken against the driver involved.

How long has it been an issue?

Many years

What would you like done to resolve this issue?

It should be apparent from all of the above that this stretch of the B3083 is particularly dangerous. Whilst this danger can't be removed entirely, better signage, appropriately situated, could make a considerable difference. A lower speed would also reduce the likelihood of a serious injury or fatality and allow vehicle drivers increased thinking and braking time.

I would suggest the following safety measures should be adopted as a minimum:

The speed limit on the B3083, from the A303 to the 30mph limit on the northern outskirts of Berwick St James, should be reduced from 50mph to 40mph

The southbound side of the B3083 should have a 'pedestrians in road' sign situated 40 -50 metres before the kissing gate and a repeater 20-30 metres after the kissing gate.

The southbound SLOW road marking should be moved back to be at the 'pedestrians in road' sign.

It would be desirable to have cyclist and horse warning triangles co-located with the 'pedestrians in road' sign on the south-bound carriageway.

The northbound SLOW road marking and bend signs seem to be in a reasonable place. However, it is essential that cyclist and horse warning triangles are co-located with it.

No 'pedestrians in road' warning triangle is needed on the northbound section of road as walkers are rarely rash enough to walk on this side of the road.

Have you been in touch with your local Wiltshire Councillor? (Yes/No)

No

This form needs to be completed and e-mailed or sent to your local Town or Parish Council.

Town and Parish contact details are available via the link below:

<https://cms.wiltshire.gov.uk/mgParishCouncilDetails.aspx>

Town or Parish Council Comments: (To be completed by Town or Parish Council only)

This issue was discussed at the Parish Council meeting on 12 Jan 21 when it was decided that action should be taken and the CATG approached. The issue was raised by Cllr Dr Andrew Shuttleworth but the issue has been known to all for many years and stories have been told by parishioners over the years of close shaves whilst walking, cycling and on horseback.

Amesbury Area Board Health and Wellbeing Meeting Tuesday 4 February 2021 Round-up from the meeting

1. Information and initiative sharing:

A well-attended meeting was held with multiple organisations and agencies from Amesbury and the surrounding villages. Cllr Graham Wright chaired the meeting.

Action all: Please could everyone send Jacqui a paragraph or two regarding their service / activities. Jacqui would assist the process by sending out a form to complete. (Attached to these notes)

Carolyn Taylor provided information regarding the **Health Improvement Coaches**: A dedicated Health Improvement Coach can assist people every step of the way to achieving and maintaining your goals to improve health and mental wellbeing. They can help find other services and activities. This service is for people aged 18 + and is free.

Carolyn informed the meeting that there is capacity in the service if people need support. An important area that was available was support around mental health

Action all: please refer or get in touch if you know of anyone who needs some support from the service.

If you work with people in Wiltshire and would like to know more about the service and how we can work together, you can email or phone – there is also a self-referral form. Information can be found here:

<https://www.wiltshire.gov.uk/public-health-improvement-coaches>

Barry Davis informed the meeting that there was food available to those who need it from the Baptiste Church – it was a pop up foodbank and they were receiving free excess stock:

Amesbury Baptist Centre, Butterfield Drive, SP4 7SN
Office Tel: 01980 625255 Mobile: 07542 070956

There was also a foodbank operating from the information Centre, Flowers Lane, Amesbury SP4 7JE. Open Tuesday and Thursday 3pm – 5pm.

Maria reported that January had been the busies month in their history with 5,000 emergency food meals (including Salisbury). Amesbury were around 10% of those supported.

Nicole Abela was also working with the pantry partnership to deliver food parcels – this was mainly in the Salisbury area. There had been referrals for 100 families over Easter. Details could be found here:

<https://www.thepantrypartnership.org/>

Action: It would be useful to put a programme of food resources together for the Amesbury area – Jacqui would follow this up.

Graham Audin reported that the Amesbury Hoppa service is operating and available for passengers. In 2019 they had 28,000 passengers but in 2021, this was down to 8,000 due to Coronavirus. Link Schemes were also down 70%. Yet both are providing a vital services to get people to health and wellbeing appointments and around the local area for shopping. Information on the Hoppa bus service can be found here:

<https://bustimes.org/services/hpb-amesbury-boscombe-down-amesbury-hopper-b>

<https://adults.wiltshire.gov.uk/Services/530>

Maureen Atkinson reported that the Bourne Valley link scheme was taking people to vaccine appointments and had taken 25 people recently. Also for shopping and prescriptions. Details of link schemes can be found here:

<http://www.southwilts.com/site/Winterbourne-Parish-Council/BV-Link-Scheme.htm>

Community lunches were running successfully via Zoom meetings every Thursday and around 14 people attended each week. Contact Maureen for more information: maureenatkinson16@gmail.com

Irene Kohler, Salisbury Older People's Champion reported that there would be afternoon tea deliveries taking place in Amesbury – she was looking for nominations for the isolated people to receive them. Anyone could register and pick up a tea and take it to a vulnerable person with social distancing in place.

(Post meeting note: the afternoon teas will be available 11 & 12 April from 12 noon until 2pm from the information Centre in Amesbury).

Action all: Please see the details here and organise & book pick up:

<https://ocm.wiltshire.gov.uk/amesbury/afternoon-tea-delivery-for-isolated-isolating-older-people-in-amesbury-durrington-and-local-villages/>

Rev. Jonathan Plows reported that the Langfords were trying to recreate activities online and were hoping to have the clubs running when safe to do so. The Wednesday

Club had been closed for now but they had kept in touch with all participants. Isolation, mental health issue including young families was a growing issue.

Nicole Abela (Abri Housing) reported back on the success of the Gardening Outreach project. She was also supporting a new community group who were looking for a community garden.

Action all: please contact Jacqui or Nicole if there are ideas for a location.

Nicole was also looking into inter-generational projects and there was a lot of interest in this from others at the meeting.

Durrington – Graham reported a number of groups in operation such as the WI, Crafty Crafters, Over 60s, Friday Club and Friends of Durrington – the key was for all groups to be aware of each other's services and to link up and work together. Communication and publicity of what is on is key.

Action all: Jacqui reminded everyone about OCM Our Community Matters – please register and put your news onto this site and a newsletter goes out to over 1000 people each Friday plus to over 1000 on twitter, so well worth doing:

<https://ocm.wiltshire.gov.uk/amesbury/register/>

Graham also suggested that the group hold a mental health workshop whereby organisations can get together to discuss what is available, where are the gaps and how everyone could work together to target those in need and offer services.

Action: Jacqui would set this up and invite a wide range of groups.

(Post meeting note: Please see separate notes following the Mental Health workshop that took place on 24 February).

Celebrating Age were also visiting areas safely and providing concerts online and outdoors when the weather was agreeable. Some of the performances can be found here:

<https://www.wiltshiremusic.org.uk/learn-take-part/celebrating-age>

and a taste of the concerts here:

<https://www.youtube.com/watch?v=zdq-3xn35xo>

Farley's Malone were still providing virtual community lunches:

<https://www.farleymalonecommunity.org/>

2. Update on Health and Wellbeing grants awarded

The meeting heard that the award of small projects around £300 in the run up to Christmas and in January had gone very well indeed with a number of project supporting vulnerable and isolated people in Amesbury and the surrounding villages. A snapshot of some of these projects are:

| | |
|--|---|
| 3945-Taking afternoon tea to isolated older people | Salisbury Older People's Champion |
| 3926-Virtual Christmas Party Celebration and on going weekly virtual lunches | Farleys Malone Community (a larger project) |
| 3938-Gardening Outreach Project | Abri |
| 3966-Gifts for members at Christmas | Durrington and District Day Centre |
| 3965-Elderly Parishioner Welfare Package | Winterbourne Stoke Village Preservation Society |
| 3959-Durrington Over Sixties Post Covid Celebration | Durrington and District Day Centre |
| 3967-Taking Afternoon Cream Tea to Durrington WI members | Durrington Women's Institute |
| 4007-Support for vulnerable and lonely in The Winterbournes | Winterbourne Parish Council |

| | |
|--|----------------------------|
| 3952-Helping the Vulnerable | Figcheldean Parish Council |
| 4096-Till Valley Large Vegetable Competition | Berwick St James Village |

3. Health and Wellbeing applications

(Post meeting applications): There are currently two applications going to the Area Board meeting on March 18th. These include:

Sing and Breath Wiltshire – Music for Wellbeing request for £1500

Easter Egg hunt – Rotary – request for £300

Please see the separate Health and Wellbeing grants report for details.

4. Budget

If grant all applications are awarded at the March 18th meeting, there will be £1,686 remaining in the budget with **£8,013 awarded to 13 projects this year.**

Action all: Please continue to submit project proposals and applications to Jacqui up to the end of March.

Amesbury Health and Wellbeing Group
Health and Wellbeing Activities Information including Mental Health Support

Please complete and return to me: jacqui.abbott@wiltshire.gov.uk

NB: Ideally, please consider using Our Community Matters to post this information. You can register easily here:

<https://ocm.wiltshire.gov.uk/amesbury/register>

Please attach a Jpeg picture to your post – a photograph or graphic.

It is worth putting articles on OCM when you can as a newsletter goes out each Friday and reaches over 1000 people, plus another 1000 via twitter. Please use this in addition to your own communication channels.

| | |
|---|--|
| What is the project / initiative name? | |
| | |
| Please give further details: | |
| | |
| Who will benefit? | |
| | |
| Where will it take place? | |
| | |
| When will it take place? | |
| | |
| Contact details / how to get involved: | |

Notes from Mental Health workshop 24 February 2021

A workshop was held by the Health and Wellbeing group to consider the rise in mental health difficulties faced by a variety of people, particularly since Covid-19. Twenty groups and organisations were in attendance and the meeting was chaired by Cllr Graham Wright.

Jacqui shared a list of agencies that were providing Mental Health support (included with the agenda papers).

The meeting discussed local projects that were taking place and the plans to set up a range of activities during 2021 subject to national guidelines. These local projects would help to support people in addition to the services already available. More work would be undertaken on identifying gaps in services which local organisations and groups would attempt to fill. A lot of support was currently being offered by community groups and Parish Councils, including those groups set up as a response to Covid-19.

Key groups who seem to be facing increased difficulties include:

- Young people (13 – 19 age range)
- Younger children – years 5 and 6 becoming affected
- Families with young children – due to lockdown and pressures on finances
- Older people – vulnerable and isolated people
- Parent Carers – support services decreased due to Covid-19
- Disabled people through isolation and loneliness & reduced services

Actions from the meeting:

- **Jacqui would send a form to everyone to collate these projects & initiatives – see form on page 6 of this paper.**
- **All to put their projects and initiatives onto Our Community Matters (OCM) so that they would be included in a newsletter that goes out each Friday:**
- **<https://ocm.wiltshire.gov.uk/amesbury/>**
- **All to keep in touch via Amesbury Health and Wellbeing group & other forums**
- **All to feedback on gaps in provision as information becomes available**
- **All to make sure they are aware of support available from a range of organisations such as Health Improvement Coaches which offer Mental Health support and have capacity at this time**

Please see also the list of Mental Health Support Services.

Wiltshire Mental Health and Wellbeing Support Services

| | | |
|----------------------|-------------------------------------|------------------------|
| ▲ Adults | * Children and young people | 🗨️ Counselling |
| ■ Employment support | 🏠 Housing and homelessness guidance | £ Finance and benefits |
| + Addiction services | ♥️ Carers | ◆ Veterans |

| | | |
|--|---|-------------|
| Alabaré Riverside Sanctuary | Confidential service for anyone struggling to manage their mental wellbeing (16+). Call: 01722 466680 Email: riversidesanctuary@alabare.co.uk alabare.co.uk/home/riverside-sanctuary/mental-health | ▲ |
| Building Bridges | Helping people overcome barriers into employment or education. Call: 01380 732821 Email: hello@buildingbridgessw.org.uk buildingbridgessw.org.uk | ▲■ |
| Child and Adolescent Mental Health Service (CAMHS) | Supporting children and young people with emotional, behavioural and mental health difficulties. Call: 0300 247 00990 Email: vcl.wiltshirespa@nhs.net oxfordhealth.nhs.uk/camhs/refer (including self-referrals) wiltshirechildrensservices.co.uk/spa/teams/single-point-of-access-team | * |
| Carer Support Wiltshire | Free counselling and support for carers. Call: 0800 181 4118 Email: admin@carersupportwiltshire.co.uk carersupportwiltshire.co.uk | ▲*🗨️♥️ |
| Citizens Advice Wiltshire | Providing free, independent advice for the people of Wiltshire. Call: 0800 144 8848 Textphone: 18001 0800144 8848 citizensadvicewiltshire.org.uk | ▲■🏠♥️£ ◆ |
| Combat Stress | Mental health support for veterans. 24-hour helpline: 0800 138 1619 combatstress.org.uk | ▲◆ |
| CRUSE | Bereavement support. Helpline: 0808 808 1677 Email: helpline@cruse.org.uk cruse.org.uk | ▲*🗨️ |
| Dorothy House Hospice Care | Phone line offering bereavement counselling for families affected by cancer. Call: 0345 0130 555 dorothyhouse.org.uk | ▲* |
| Family Community Learning | Free interactive adult learning courses. Call: 01225 770478 Email: familyandcommunitylearning@wiltshire.gov.uk workwiltshire.co.uk/family-learning | ▲■ |
| Family Counselling Trust | Counselling services for children, young people and their families. Fees based on income. Email: flo-wiltshire@familycounsellingtrust.org familycounsellingtrust.org | ▲🗨️ |
| Harmless | Self-harm support, advice, and information. harmless.org.uk | ▲* |
| Help Counselling | Free and low-cost counselling for adults and young people in west Wiltshire. Call: 01225 767459 Email: enquiries@helpcounselling.co.uk helpcounselling.co.uk | ▲*🗨️ |
| Help for Heroes | Helping wounded veterans and their families recover and get on with their lives. Call: 01980 844388 Email: west.hub@helpforheroes.org.uk helpforheroes.org.uk | ▲◆ |
| Julian House | Charity supporting vulnerable and at-risk people, including supported housing and support for travelling communities. Call: 01225 354650 Email: admin@julianhouse.org.uk julianhouse.org.uk | ▲■🏠 |
| Mental Health Response Line | 24/7 advice and support for adults and children in crisis, provided by Avon and Wiltshire Mental Health Partnership NHS Trust. Call: 0800 953 1919 awp.nhs.uk/advice-support/24-hour-support | ▲* |
| Motiv-8 | Substance misuse service for young people aged 11-18, provided by Developing Health and Independence. Free helpline: 0800 169 6136 Email: info@dhimotiv8.org.uk dhi-online.org.uk | *+ |
| PANDAS | Support for people affected by perinatal mental illness. Free helpline: 0808 1961 776 Email: info@pandasfoundation.org.uk pandasfoundation.org.uk | ▲* |

| | | |
|--|--|--------|
| PTSD Resolution | Free Post Traumatic Stress Disorder counselling for former armed forces, reservists, families. Free helpline: 0300 302 0551 Email: contact@ptsdresolution.org ptsdresolution.org | ▲ * 🗨️ |
| Relate Mid Wiltshire | Relationship counselling, family counselling and counselling for children and young people. Fees charged per session. Call: 0300 003 1781 relate.org.uk/mid-wiltshire | ▲ * 🗨️ |
| Revival Wiltshire | Free confidential counselling and support to male and female (13+) survivors of rape, sexual abuse, or sexual exploitation. Call: 01225 751 568 Email: appointments@revival-wiltshirerasac.org.uk revival-wiltshirerasac.org.uk | ▲ * 🗨️ |
| Richmond Fellowship | Free one to one mental health support through recovery and social inclusion; housing support and employment services. Call: 01380 724833 Email: wiltshirereferrals@richmondfellowship.org.uk richmondfellowship.org.uk/wiltshire | ▲ ■ 🏠 |
| SSAFA | Lifelong support to the armed forces community and direct support for individuals in need of physical or emotional care. Free helpline: 0800 731 4880 Email: wiltshirebranch@ssafa.org.uk ssafa.org.uk/wiltshire | ▲ ◆ |
| Samaritans | 24-hour emotional support for any problem, big or small. Open 365 days a year. Free helpline: 116 123 Email: jo@samaritans.org samaritans.org | ▲ * |
| Shaw Trust | Supporting people into the workplace and improving their health and wellbeing; helping vulnerable young people build life skills. Call: 0300 30 33 111 shawtrust.org.uk | ▲ ■ |
| Shelter | The housing and homelessness charity. Free helpline: 0808 800 4444 england.shelter.org.uk | ▲ * 🏠 |
| Stonewall | Advice and information for the LGBTQ+ community – adults, children, and young people. stonewall.org.uk/help-and-advice | ▲ * |
| The Advocacy People | Independent advocacy support for mental health, NHS complaints, care and support, and children and young people. Call: 0330 440 9000 Email: info@theadvocacypeople.org.uk theadvocacypeople.org.uk | ▲ * ◆ |
| Turning Point – IMPACT Swindon and Wiltshire Active Recovery service | Free, confidential service if you're concerned about your own or someone else's substance use. Call: 01225 341520 (Trowbridge) 01722 343000 (Salisbury) 01793 328150 (Swindon) Email: IMPACTreferrals@turning-point.co.uk turning-point.co.uk | ▲ + |
| Veteran Outreach Support | Supporting veterans and their families. Call: 02392 731 767 Email: admin@vosuk.org vosuk.org | ▲ * ◆ |
| Wiltshire Centre for Independent Living | Provides a range of services supporting disabled people to live independent lives. Call: 0300 1233 442 wiltshirecil.org.uk | ▲ |
| Wiltshire Early Mental Health Service | Support, advice, and information for young people aged 5-18. onyourmind.org.uk | * |
| Wiltshire Mind | Counselling and peer support groups for adults and young people experiencing mental ill health or emotional distress. Call: 01225 706532 Email: office@wiltshiremind.co.uk wiltshiremind.co.uk | ▲ * 🗨️ |
| Wiltshire Parent Carer Council | Support for parents and carers of children and young people with special educational needs and/or disabilities. Call: 01225 764 647 Email: admin@wiltspcc.co.uk wiltshireparentcarercouncil.co.uk | ▲ * ♥ |
| Wiltshire Service Users Network | Supports people who use health and social care services, including people with learning disabilities and autism, older people, and those with physical or sensory impairments. Call: 01380 871800 Email: info.wsun@btconnect.com wsun.co.uk | ▲ |
| Wiltshire Wildlife Trust Wellbeing Programme | Providing nature-based activities for people struggling with their mental health. Call: 01380 736098 Email: melanie@wiltshirewildlife.org wiltshirewildlife.org/the-wellbeing-programme | ▲ ■ |
| Wiltshire Wellbeing Hub | Help with deliveries of food and other essentials and supporting your wellbeing if you're self-isolating due to Covid-19. Call: 0300 003 4576 Email: wellbeinghub@wiltshire.gov.uk | ▲ * |

Amesbury Youth Forum / Network Update from Forum meeting Tuesday 2 March

Attended by:

James Dwyer (God Unlimited);
James Tarring (MOD);
Lucy Hunter (MOD);
Jacqui Abbott (Wiltshire Council)
Cllr Fred Westmoreland (Wiltshire Council);
Cllr Kevin Daley (Wiltshire Council)
Cllr Robert Yuill (Wiltshire Council);
Becky Lock (Durrington Youth Service)
Jonathan Russell (Wessex Circus);
Rob Paget (Wiltshire Council);
Lucy Wileman (Police);
Tim Elliot (Shrewton Parish Council);
Duncan Souster (Amesbury Rugby Club);
Nicole Abela (Abri Housing);
Karlene Jammeh (Wiltshire Council)
Tom Pugh (District Sports);
Cllr Mark Verbinnen (Amesbury Town Council).

The forum shared information regarding any provision that they were currently offering although this was very limited due to Covid-19. The group also gave information on their planned activities for 2021.

Action: All to input these details onto the Our Community Matters website and to complete the attached form for Jacqui to collate.

<https://ocm.wiltshire.gov.uk/amesbury/>

A newsletter goes out each Friday so this is excellent publicity for any activities planned.

The group agreed that engagement with young people had been reduced due to Covid-19. Some groups had managed to maintain some contact in a socially distanced and safe way, particularly with vulnerable individuals. It was agreed that when safe to do so, each organisation would actively

engage with young people and feedback their concerns and priorities to the Youth forum.

Action: All to engage with their respective young people when safe to do so. This would make sure that a Youth Voice was a strong part of the Amesbury Youth Forum

Jacqui reported that the previous LYN had been actively going into schools and there had been a needs assessment. This assessment required updating and it was hoped this would happen in September, giving time for schools to settle back in.

Action: Jacqui & reps from the group to work on the Needs Assessment / Youth Voice when able to do so

The group discussed funding opportunities including the Amesbury Area Board youth activities fund. This would be fully utilised by the end of March as there were a few applications being submitted – see separate Youth grants report. Jacqui shared the Schools Funding bulletin (included with this paper) which the group found useful. Jacqui reminded the group that applications to the Area Board required match funding.

Action: all to share funding opportunities with the Forum

It was agreed that 4 meetings a year of the Youth Forum would be useful. Jacqui volunteered to set these up for the group, online at the moment.

**Action: Jacqui to set up 4 x meetings per year
Jacqui to circulate contact list (all agreed)**

It was agreed that a volunteer was required to chair the next meeting – either a Wiltshire Councillor or a member of the community groups. It could be a rotating position.

Action: Jacqui to liaise with the group to identify a Chair for the next meeting.

A brief discussion took place regarding the naming of the Forum – should it be a forum or a network?

Ideally there would be Terms of Reference agreed. Jacqui confirmed that turns should be taken for taking any notes and / or everyone to take their own notes.

Amesbury Youth Forum
Youth Activities Information

Please complete and return to: jacqui.abbott@wiltshire.gov.uk

NB: Ideally, please consider using Our Community Matters to post this information. You can register easily here:

<https://ocm.wiltshire.gov.uk/amesbury/register>

Please attach a Jpeg picture to your post – a photograph or graphic.

It is worth putting articles on OCM when you can as a newsletter goes out each Friday and reaches over 1000 people, plus another 1000 via twitter. Please use this in addition to your own communication channels.

| | |
|---|--|
| What is the project / initiative name? | |
| | |
| Please give further details: | |
| | |
| Who will benefit? | |
| | |
| Where will it take place? | |
| | |
| When will it take place? | |
| | |
| Contact details / taking part | |

| | |
|-----------------|---------------------------------|
| Report to | Amesbury |
| Date of Meeting | 18/03/2021 |
| Title of Report | Amesbury Community Youth Grants |

1. Purpose of the report:

To ask Councillors to consider the following applications seeking funding from the Amesbury Area Board.

| Application | Grant Amount | |
|--|-------------------|--|
| Applicant: Durrington Youth Services Project Title: Durrington Youth Services | £6456.25 | |
| Applicant: Army Welfare Service - Community Support Project Title: Easter Holiday Craft Packs | £2440.00 | |
| Applicant: Army Welfare Service - Community Support Project Title: Larkhill Summer Holiday Activity Provision | £4500.00 | |
| Project Title: Amesbury Rural Youth project Amesbury Area Board initiative | £5,000 | |
| Total grant amount requested at this meeting | £18,396.25 | |

2. Main Considerations

Councillors will need to be satisfied that grants awarded in the 2020/21 year are made to projects that can realistically proceed within a year of the award being made.

Area Boards have authority to approve Area Grants under powers delegated to them by the Cabinet. Under the Scheme of Delegation Area Boards must adhere to the Area Board Grants Guidance 2020/21.

Community Youth Grants will contribute to the continuance and/or improvement of cultural, social and community activity and wellbeing in the community area, the extent and specifics of which will be dependent upon the individual project.

Community Youth Grants give all local community and voluntary groups, Town and Parish Councils an equal opportunity to receive funding towards community-based projects and schemes.

If the awards are made as requested, there will be no more money left in the Youth Activities budget for the 20/21 year with the new funding year for 21/22 set to begin on 1 April 2021.

3. The applications

| | | |
|---|--|--|
| <p>Applicant: Durrington Youth Services Project Title: Durrington Youth Services</p> | <p>Amount Requested from Area Board: £6456.25</p> | |
| <p>This application meets grant criteria 2020/21</p> <p>Project Summary: Durrington Youth Services provide 3 youth sessions per week for 48 weeks of the year to children and young people in the age range of 7 - 19. We provide a safe and welcoming environment for children and young people to engage in a range of activities projects and opportunities where they can develop new skills and build confidence. We build positive relationships with children and young people to provide information advice guidance and support. All sessions are designed based on children and young peoples needs and interests. We are advocates for children and young people who attend managing this service for them.</p> <p>CEM input: Durrington Youth Service has continued to provide outreach work and virtual support during the Covid-19 pandemic. The are hoping to open up to youngsters as soon as it is safe to do so. It is a much needed and well used service within the area.</p> | | |
| <p>Applicant: Army Welfare Service - Community Support Project Title: Easter Holiday Craft Packs</p> | <p>Amount Requested from Area Board: £2440.00</p> | |
| <p>This application meets grant criteria 2020/21</p> <p>Project Summary: As a result of the COVID-19 pandemic the Army Welfare Service Community Support Team are currently unable to deliver services face-to-face. This project will help support armed forces families over the Easter period by providing activity packs to families living in and around the Larkhill amp Bulford areas. The packs aim to help keep families entertained during the Easter holiday period and are aimed at families with children and young people aged 5-17.</p> <p>CEM input: This beneficiaries of this project will also include civilian families. The application meets the grants criteria. Match funding is available. The grant from the Area Board will target the 13 – 17 age range.</p> | | |

| | | |
|--|---|--|
| <p>Applicant: Army Welfare Service - Community Support Project Title: Larkhill Summer Holiday Activity Provision</p> | <p>Amount Requested from Area Board: £4500.00</p> | |
| <p>This application meets grant criteria 2020/21 Project Summary: AWS Community Support seeks to provide a range of diverse inclusive and aspirational summer activities across the school summer holidays for military and civilian young people residing in Larkhill and the surrounding areas. These activities will primarily include outdoor opportunities and seek to positively impact young peoples mental health in areas such as confidence resilience positive relationships and well-being ready for a full return to education in September and in response to the effects of the COVID-19 pandemic. CEM input: This beneficiaries of this project will also include civilian families. This will be an intensive 6 week activity programme open to all and well publicised across Larkhill, Durrington and Shrewton. The application meets the grants criteria. Match funding is available. The grant from the Area Board will target the 13 – 17 age range.</p> | | |
| | | |
| What is the project name? | Rural Youth Project | |
| What is the project? | <p>The Area Boards in the Warminster, Amesbury, Pewsey, Tidworth, Southern Wiltshire and South West Wiltshire community areas have identified a need to increase engagement with young people in their areas, particularly in more rural areas. We are seeking a provider who will work across several community areas to develop a stronger offer of positive activities and other services aimed especially at those who are potentially at risk.</p> <p>The term of the project is initially for 12 months but may be extended later</p> <p>It is envisaged that the project deliverer will need an initial period of 4 months of consultation and research to ensure that the programme compliments and strengthens what already exists, addresses need, has local ownership and will make a difference.</p> <p>Following this research phase, the selected provider, working alongside local partners, clubs and organisations would be required to design and</p> | |

| | |
|--|---|
| | <p>deliver a programme of activities in each community area. An initial research period of 4 months means that this activities phase will last 8 months.</p> <p>Consideration would need to be given to the fact that in a rural county such as Wiltshire, isolation and poor mental health can be hidden amongst certain vulnerable groups of young people. Some evidence of local need, addressing gaps and making a difference would be required.</p> <p>At the end of the first year a full report on the outcomes from the project will be required before Area Boards consider additional funding to continue the project for a further period of 12 months.</p> <p>Desired outcomes from the project are:</p> <ul style="list-style-type: none"> • Improved level of engagement with young people in the community areas, particularly with isolated young people in rural areas • Increase in positive activities available • Reduced isolation of young people in rural areas • Identification of young people with issues around mental health, educational attainment and physical health issues • Evidenced improvement in the above areas for those individuals identified • Evidence that the needs of minority groups have been addressed <p>A sustainable model has been developed in collaboration with key local partners and stakeholders</p> |
| <p>Who will benefit?</p> | <p>All young people within the community area and particularly those who are not already accessing positive activities</p> |
| <p>When will it take place?</p> | <p>We hope that the project will start within weeks and run for a year initially</p> |
| <p>What are the financial considerations?</p> | <p>6 community areas are jointly funding this project. Some including Amesbury set aside some remaining youth funding from 2019/20 to use for this project. However mainly due to the pandemic, we have not been able to start.</p> |

| | |
|-----------------------|--|
| | Normally no funding that is accrued can be carried over to the following financial year which in this case starts in April 2021. Due to the circumstances we have requested special dispensation, but this is not guaranteed. If agreed, this funding will return to the budget for 2021/22. |
| Recommendation | That the Amesbury Area Board makes a decision regarding putting aside £5k for the Rural Youth Project. |

Report Author:

Jacqui Abbott

Community Engagement Manager

T: 01722 434 344 M: 07771 844 530 E: jacqui.abbott@wiltshire.gov.uk

| | |
|------------------------|------------------------------|
| Report to | Amesbury Area Board |
| Date of Meeting | 18/03/2021 |
| Title of Report | Community Area Grant funding |

Purpose of the report:

To consider the applications for funding listed below

| Applicant | Amount requested |
|--|-------------------------|
| Applicant: Idmiston Parish Council Project Title: Gomeldon Zip Wire View full application | £5000.00 |
| Applicant: The Bridge Youth Project Project Title: Social Skills Project in Schools View full application | £700.00 |
| Applicant: The vault gymnastics & fitness centre Project Title: The vault new landing area and tumble mat View full application | £2000.00 |
| Applicant: Bourne Valley Scout Group Project Title: Repairs to Scout storage facility View full application | £500.00 |
| Applicant: Shrewton Sports and Social Club Project Title: Shrewton Social Club New Kitchen View full application | £3500.00 |
| Applicant: Winterbourne Parish Council Project Title: Safety improvements to Winterbournes sport and recreation facilities View full application | £5000.00 |
| Applicant: WINTERBOURNE GLEBE HALL MANAGEMENT COMMITTEE Project Title: Establish a New Village Hall Website View full application | £750.00 |

| | |
|--|-----------------|
| <p>Applicant: Tilshead Parish Council Project Title: Speed Indicator Device Purchase</p> <p>View full application</p> | <p>£1349.32</p> |
| <p>Applicant: Amesbury History Centre CIO Project Title: Audio visual equipment</p> <p>View full application</p> | <p>£4911.54</p> |

1. Background

Area Boards have authority to approve Area Grants under powers delegated to them. Under the Scheme of Delegation Area Boards must adhere to the [Area Board Grants Guidance](#)

[The funding criteria and application forms](#) are available on the council's website.

2. Main Considerations

2.1. Councillors will need to be satisfied that funding awarded in the 2015/2016 year is made to projects that can realistically proceed within a year of it being awarded.

2.2. Councillors must ensure that the distribution of funding is in accordance with the Scheme of Delegation to Area Boards.

2.3. Councillors will need to be satisfied that the applications meet the Community Area Board grants criteria.

3. Environmental & Community Implications

Grant Funding will contribute to the continuance and/or improvement of cultural, social and community activity and wellbeing in the community area, the extent of which will be dependent upon the individual project.

4. Financial Implications

Financial provision had been made to cover this expenditure.

The Amesbury Area Board capital grants fund has a balance of £31,890.50. Grant requests total £23,710.86. If awards are made as requested, the amount remaining will be £8,179.64.

5. Legal Implications

There are no specific legal implications related to this report.

6. Human Resources Implications

There are no specific human resources implications related to this report.

7. Equality and Inclusion Implications

Community Area Boards must fully consider the equality impacts of their decisions in order to meet the Council's Public Sector Equality Duty.

Community Area Grants will give local community and voluntary groups, Town and Parish Council's equal opportunity to receive funding towards community based projects and schemes, where they meet the funding criteria.

8. Safeguarding Implications

The Area Board has ensured that the necessary policies and procedures are in place to safeguard children, young people and vulnerable adults.

9. Applications for consideration

| Application ID | Applicant | Project Proposal | Requested |
|--|-------------------------|-------------------|-----------|
| 4202 | Idmiston Parish Council | Gomeldon Zip Wire | £5000.00 |
| <p>Project Description: To replace the existing broken and rotted wooden zip wire taken out of service for safety reasons with a new steel zip wire of the same length.</p> <p>Input from Community Engagement Manager: This application meets our grants criteria 20/21. There is match funding in place from the Parish Council to provided equipment for older children who will benefit form this coming out of Covid-19.</p> <p>Proposal That the Area Board determines the application.</p> | | | |

| Application ID | Applicant | Project Proposal | Requested |
|--|--------------------------|----------------------------------|-----------|
| 4184 | The Bridge Youth Project | Social Skills Project in Schools | £700.00 |
| <p>Project Description: The ratio is 42 children to staff. We are a charity that provides a range of programmes and support to children and staff across local schools. Our Social Skills programme supports children in local schools in small groups of no more than 4-at-a-time. Its a 7-week course that aims to build confidence self-esteem and support the mental health and wellbeing of children and it happens during the school day. There is obviously a big need at the moment with the impact of COVID and lockdown. The team really need a good quality laptop that we can use across these key schools in order to deliver these social skills sessions and wed like to appeal to the councillors for some funding that would enable us to purchase one for this use. We will be working again at Amesbury Primary School. Durrington Juniors St Nicholas Porton where we have already some virtual online support. We also anticipate that Newton Tony School might access our services in the next couple of months as they have expressed an interest. Thank you.</p> <p>Input from Community Engagement Manager: This application meets our grants criteria 20/21. There is match funding in place. This project is for capital expenditure and will support young people & children's mental health which has been affected during Covid-19.</p> <p>Proposal That the Area Board determines the application.</p> | | | |

| Application ID | Applicant | Project Proposal | Requested |
|--|---------------------------------------|---|-----------|
| 4052 | The vault gymnastics & fitness centre | The vault new landing area and tumble mat | £2000.00 |
| <p>Project Description: We are looking to purchase a gymnastics landing area for the use of our local community this to include both children and adults. This needs to be versatile for the landing of several pieces of apparatus. This will be a bespoke solution to fit our needs and will consist of a inflatable bed with soft foam on the top. We also require some more carpet matting for the tumble strip which has at present got individual mats that slip when running on.</p> <p>Input from Community Engagement Manager: This application meets our grants criteria 20/21. There is match funding in place. Although the organisation is a business, the project is solely for the benefit of the community and is not a profit making project – in line with our grants criteria.</p> <p>Proposal That the Area Board determines the application.</p> | | | |

| Application ID | Applicant | Project Proposal | Requested |
|---|---------------------------|-----------------------------------|-----------|
| 4010 | Bourne Valley Scout Group | Repairs to Scout storage facility | £500.00 |
| <p>Project Description: Repairs required to leaking roof and other defects to building to help prevent our equipment being damaged from weather and vermin.</p> <p>Input from Community Engagement Manager: This application meets our grants criteria 20/21.</p> <p>Proposal That the Area Board determines the application. Match funding is in place.</p> | | | |

| Application ID | Applicant | Project Proposal | Requested |
|--|---------------------------------|----------------------------------|-----------|
| 4024 | Shrewton Sports and Social Club | Shrewton Social Club New Kitchen | £3500.00 |
| <p>Project Description: Install new kitchen and associated building electrical decoration flooring works</p> <p>Input from Community Engagement Manager: This application meets our grants criteria 20/21. There is match funding in place.</p> <p>Proposal That the Area Board determines the application.</p> | | | |

| Application ID | Applicant | Project Proposal | Requested |
|---|-----------------------------|--|-----------|
| 4159 | Winterbourne Parish Council | Safety improvements to Winterbournes sport and recreation facilities | £5000.00 |
| <p>Project Description: At the village main amenity area Winterbourne Dauntsey. To improve safety of young users and facilitate greater diverse use of the amenity field we intend to install metal fencing and access gates to enclose all younger children's play equipment within a secure area. Installation of hard-wearing hybrid turf in two goal mouths in the Glebe field adjacent to the village hall will improve the functionality and safety of this recreational area. This project takes into account lessons learned from recent coronavirus lockdown periods when local recreational facilities were in much greater demand and we expect this trend to continue.</p> <p>Input from Community Engagement Manager: This application meets our grants criteria 20/21. There is match funding in place from the Parish Council. This project will support families and children's mental health by encouraging activity outside.</p> <p>Proposal That the Area Board determines the application.</p> | | | |

| Application ID | Applicant | Project Proposal | Requested |
|---|--|--------------------------------------|-----------|
| 4171 | WINTERBOURNE GLEBE HALL MANAGEMENT COMMITTEE | Establish a New Village Hall Website | £750.00 |
| <p>Project Description: As part of our post Covid-19 pandemic regeneration of the halls finances the trustees need to improve their marketing publicity and promotion capabilities. The project aims to produce a professionally based website with modern infographics to attract new hall users find and build partnerships with potential funders build wider interests in events attract volunteers and trustees plus improve engagement with the local community. The site will incorporate a user-friendly booking system to reserve slots in the hall and a calendar system for displaying upcoming events and improve our links with Wiltshire Village Hall Association and Wiltshire Together Platform.</p> <p>Input from Community Engagement Manager: This application meets our grants criteria 20/21. There is match funding in place. This is capital expenditure.</p> <p>Proposal That the Area Board determines the application.</p> | | | |

| Application ID | Applicant | Project Proposal | Requested |
|--|-------------------------|---------------------------------|-----------|
| 4191 | Tilshead Parish Council | Speed Indicator Device Purchase | £1349.32 |
| <p>Project Description: To assist the Parish Council in purchasing its own SID to compliment the efforts of the Community Speed Watch team to reduce the amount of speeding traffic through the Village.</p> <p>Input from Community Engagement Manager: This application meets our grants criteria 20/21. There is match funding in place.</p> <p>Proposal That the Area Board determines the application.</p> | | | |

| Application ID | Applicant | Project Proposal | Requested |
|---|-----------------------------|------------------------|-----------|
| 4200 | Amesbury History Centre CIO | Audio visual equipment | £4911.54 |
| <p>Project Description: To provide a modern and informative experience through V R head setts visual screens and audio for both the local community and to encourage tourists into the town and local area. We will also laisse with local and national educational establishments. https://www.amesburyhistorycentre.org.uk</p> <p>Input from Community Engagement Manager: This application meets our grants criteria 20/21. There will be match funding in place subject to fundraising.</p> <p>Proposal That the Area Board determines the application.</p> | | | |

No unpublished documents have been relied upon in the preparation of this report

Report Author:

Jacqui Abbott

Community Engagement Manager
T:01722 434 344 M: 07771 844 530
jacqui.abbott@wiltshire.gov.uk